

# AMSOIL®

## FACTORY DIRECT RETAIL CATALOG



Rapture Challenger  
Downforce Motorsports

Free Shipping  
on Orders of  
\$100 or More!  
See page 3 for details.

### NEW PRODUCTS





*The First in Synthetics®*

In 1972, AMSOIL set all-new standards for motor oil quality when it introduced the world's first synthetic motor oil to meet American Petroleum Institute (API) service requirements. Today, AMSOIL remains steadfast in its commitment to quality and precision lubricant engineering.

The company's state-of-the-art mechanical testing laboratory allows it to stay on the cutting edge of lubricant technology. Equipped with three 480-sq. ft. dynamometer cells capable of housing a minimum of two dynamometers each, the facility allows AMSOIL to test motor oil performance on-site, allowing quick turn-around times, the ability to modify conditions to measure different oil properties and unique testing not available elsewhere.



② TO ORDER – Call 1-800-956-5695, 7 a.m. to 5 p.m. Central Time, M – F  
Free Shipping on Orders of \$100 or More (except in Alaska and Hawaii)

# TWO WAYS TO SAVE

## 1 Free Shipping OR 2 Buy Wholesale

**1. FREE SHIPPING.** Order \$100 or more in AMSOIL products and receive free ground shipping anywhere in the continental U.S.

**2. BUY WHOLESALE.** Become a Preferred Customer and save approximately 25 percent on each order. You'll pay regular AMSOIL shipping rates, but still save more on all orders

### TECHNICAL QUESTIONS

Direct all technical questions to the AMSOIL Technical Services Department at (715) 399-8324 or [tech@amsoil.com](mailto:tech@amsoil.com).

### AMSOIL WARRANTY STATEMENT

The use of AMSOIL products will not cause mechanical damage to any mechanically sound equipment when AMSOIL products are used in full compliance with AMSOIL recommendations and instructions. For full warranty statement see [www.amsoil.com/warranty.aspx](http://www.amsoil.com/warranty.aspx).

### SHIPPING AND HANDLING

**Continental U.S.** – Customers receive free shipping on orders of \$100 or more. Orders less than \$100 are charged a flat shipping fee of \$8.50. Free standard ground shipping on orders of \$100 or more is valid only for catalog orders shipped to a valid address in the continental United States. AMSOIL does not ship to PO Boxes. The \$100 threshold does not include taxes, fees or other charges. AMSOIL reserves the right to cancel any order due to unauthorized, altered or ineligible use of this offer and to modify or cancel this offer at any time. No price adjustments will be provided on previous purchases. AMSOIL Dealers, Preferred Customers and accounts are ineligible for free shipping.

**Alaska** – Add 7.5 percent to product prices for extra freight expenses. Additional freight charges will be applied based on destination within Alaska and total order weight. See Shipping Info at [www.amsoil.com](http://www.amsoil.com) for additional details.

for the duration of your P.C. membership. You'll also receive monthly email updates and the latest product news, technical information and racing headlines in *AMSOIL Magazine*. You can register as a P.C. over the phone using the referral number from the back page of this catalog (if one is listed).

**Hawaii** – Orders are shipped using the most cost-effective method and actual freight charges will be applied when orders are shipped. See Shipping Info at [www.amsoil.com](http://www.amsoil.com) for additional details.

**Military Post Boxes** – AMSOIL INC. ships orders to APO and FPO addresses for customers' personal use only. Orders are shipped using U.S. Mail Parcel Post and orders will be charged actual freight costs, which will be charged at the time the order is shipped. See Shipping Info at [www.amsoil.com](http://www.amsoil.com) for additional details.

**NOTE:** In-stock items are typically delivered within five business days. AMSOIL products cannot be shipped to post office boxes.

### PRODUCT DAMAGED DURING SHIPPING

If there is visible damage to your order upon delivery, refuse the order. It will be returned to AMSOIL INC. for inspection and a new order will be sent at no extra charge to you. If you discover hidden damage after accepting delivery of your order, call 1-800-956-5695 for damaged product instructions.

### SALES TAX INFORMATION

AMSOIL INC. is required to collect state, city, county and other taxes. AMSOIL also collects any additional taxes on lubricating products required by certain states.

**NOTE:** Freight charges, when shipped by common carrier, are exempt from sales tax in Colorado, Florida, Idaho, Iowa, Massachusetts, Oklahoma, Utah and Wyoming.

*Prices subject to change without notice.*

**WANT MORE?** Become an AMSOIL Dealer. AMSOIL products are sold through independent Dealers and the company is currently seeking hard-working people to join its Dealer network. AMSOIL offers plenty of support. There are no quotas to fill and no inventory requirements. This opportunity is available to you for less than \$50. *New customers call 1-800-956-5695 and order a free Dealer/Preferred Customer Information Packet for information on AMSOIL Preferred Customer and Dealership opportunities.*

**TO ORDER** – Call 1-800-956-5695, 7 a.m. to 5 p.m. Central Time, M – F  
Free Shipping on Orders of \$100 or More (except in Alaska and Hawaii)

# *Reformulated.* **SIGNATURE SERIES**



AMR



AMSOIL Signature Series Synthetic Motor Oil represents the pinnacle of lubrication science. It is the result of over 40 years of synthetic lubricant engineering. Signature Series brings not only industry-leading performance, but top value as well; its extended-drain performance delivers guaranteed protection for up to 25,000 miles, 700 hours of operation or one year, whichever comes first. AMSOIL Signature Series Synthetic Motor Oil offers a rare combination of performance and value.

- **Engineered** to outperform conventional petroleum oils.
- **Reduces** friction, heat and wear for maximum power, performance and fuel efficiency.
- **Resists** high-temperature burn-off, chemical breakdown and sludging – keeps engines clean.
- **Outstanding** low-temperature fluidity for fast, dependable winter starts and immediate startup protection.
- **Exceeds** the most demanding worldwide performance standards and meets warranty requirements for all domestic and imported passenger car engines, both turbocharged and non-turbocharged.



④ TO ORDER – Call 1-800-956-5695, 7 a.m. to 5 p.m. Central Time, M – F  
Free Shipping on Orders of \$100 or More (except in Alaska and Hawaii)



### Signature Series 0W-20 Synthetic Motor Oil

API Service SN (Resource Conserving), SM... • ILSAC GF-5, 4... • GM dexos1™

STOCK#	UNITS	PKG./SIZE	WT.LBS.	COST
ASMQT	EA	1 Quart	2.1	11.50
ASMQT	CA	12 Quarts	25.2	136.40
ASM1G	EA	1 Gallon	7.9	45.00
ASM1G	CA	4 Gallons	31.6	178.20

### Signature Series 5W-20 Synthetic Motor Oil

API Service SN (Resource Conserving), SM... • ILSAC GF-5, 4... • GM dexos1™

STOCK#	UNITS	PKG./SIZE	WT.LBS.	COST
ALMQT	EA	1 Quart	2.1	11.10
ALMQT	CA	12 Quarts	25.2	131.60
ALM1G	EA	1 Gallon	7.9	43.40
ALM1G	CA	4 Gallons	31.6	171.80

### Signature Series 0W-30 Synthetic Motor Oil

API Service SN (Resource Conserving), SM... • ILSAC GF-5, 4... • GM dexos1™

STOCK#	UNITS	PKG./SIZE	WT.LBS.	COST
AZOOT	EA	1 Quart	2.1	11.50
AZOOT	CA	12 Quarts	25.2	136.40
AZO1G	EA	1 Gallon	7.9	45.00
AZO1G	CA	4 Gallons	31.6	178.20

### Signature Series 5W-30 Synthetic Motor Oil

API Service SN (Resource Conserving), SM... • ILSAC GF-5, 4... • GM dexos1™

STOCK#	UNITS	PKG./SIZE	WT.LBS.	COST
ASLQT	EA	1 Quart	2.0	11.10
ASLQT	CA	12 Quarts	24.0	131.60
ASL1G	EA	1 Gallon	7.6	43.40
ASL1G	CA	4 Gallons	30.4	171.80

\* Fortified with detergents that exceed dexos1™ sulfated ash specifications

### Signature Series 10W-30 Synthetic Motor Oil

API Service SN (Resource Conserving), SM... • ILSAC GF-5, 4...

STOCK#	UNITS	PKG./SIZE	WT.LBS.	COST
ATMQT	EA	1 Quart	2.1	11.10
ATMQT	CA	12 Quarts	25.2	131.60
ATM1G	EA	1 Gallon	7.9	43.40
ATM1G	CA	4 Gallons	31.6	171.80

### Signature Series 0W-40 Synthetic Motor Oil

API Service SN, SM... • Chrysler MS-12633, MS-10725, MS-10850 • Nissan GT-R™

STOCK #	UNITS	PKG./SIZE	WT. LBS.	COST
AZFQT	EA	1 Quart	2.1	11.50
AZFQT	CA	12 Quarts	25.2	136.40

### Signature Series 5W-50 Synthetic Motor Oil

API Service SN, SM... • Ford WSS-M2C931-C (Mustang)

STOCK #	UNITS	PKG./SIZE	WT. LBS.	COST
AMRQT	EA	1 Quart	2.1	11.50
AMRQT	CA	12 Quarts	25.2	136.40



AMSOIL Ea® Oil Filters  
See page 33.



# XL

EXTENDED LIFE

Delivering extra engine protection and performance with the convenience of twice-per-year oil changes.



Formulated to last longer in service than conventional motor oils. Extended-drain boost technology maintains maximum wear protection for up to 10,000-mile/six-month drain intervals, or longer when recommended in owners' manuals or indicated by oil life monitoring systems. Save time, money and effort.

### XL 0W-20 Synthetic Motor Oil

API Service SN, SM... • ILSAC GF-5, 4... • GM dexos1™

STOCK#	UNITS	PKG./SIZE	WT.LBS.	COST
XLZQT	EA	1 Quart	2.0	8.60
XLZQT	CA	12 Quarts	24.0	101.10
XLZ1G	EA	1 Gallon	7.8	33.20
XLZ1G	CA	4 Gallons	31.2	131.10

### XL 10W-30 Synthetic Motor Oil

API Service SN, SM... • ILSAC GF-5, 4...

STOCK#	UNITS	PKG./SIZE	WT.LBS.	COST
XLTQT	EA	1 Quart	2.1	8.60
XLTQT	CA	12 Quarts	25.2	101.20
XLT1G	EA	1 Gallon	7.8	33.25
XLT1G	CA	4 Gallons	31.2	131.20

### XL 5W-20 Synthetic Motor Oil

API Service SN, SM... • ILSAC GF-5, 4... • GM dexos1™

STOCK#	UNITS	PKG./SIZE	WT.LBS.	COST
XMLQT	EA	1 Quart	2.0	8.60
XMLQT	CA	12 Quarts	24.0	101.15
XML1G	EA	1 Gallon	7.8	33.20
XML1G	CA	4 Gallons	31.2	131.15

### XL 10W-40 Synthetic Motor Oil

API Service SN, SM...

STOCK#	UNITS	PKG./SIZE	WT.LBS.	COST
XLOQT	EA	1 Quart	2.0	8.60
XLOQT	CA	12 Quarts	24.0	101.20
XLO1G	EA	1 Gallon	7.8	33.20
XLO1G	CA	4 Gallons	31.2	131.15

### XL 5W-30 Synthetic Motor Oil

API Service SN, SM... • ILSAC GF-5, 4... • GM dexos1™

STOCK#	UNITS	PKG./SIZE	WT.LBS.	COST
XLFQT	EA	1 Quart	2.0	8.60
XLFQT	CA	12 Quarts	24.0	101.15
XLF1G	EA	1 Gallon	7.8	33.20
XLF1G	CA	4 Gallons	31.2	131.15

\* Fortified with detergents that exceed dexos1™ sulfated ash specifications



Delivering excellent engine protection and performance for vehicle manufacturer-recommended oil change intervals.



Specially formulated for the longer oil change intervals recommended by vehicle manufacturers today. Advanced synthetic technology resists chemical breakdown for maximum wear protection (and peace of mind) well beyond the traditional 3,000-mile oil change interval.

### OE 0W-20 Synthetic Motor Oil

API Service SN, SM... • ILSAC GF-5, 4... • GM dexos1™

STOCK#	UNITS	PKG./SIZE	WT.LBS.	COST
OEZQT	EA	1 Quart	2.0	7.05
OEZQT	CA	12 Quarts	24.0	82.90
OEZ1G	EA	1 Gallon	8.0	27.40
OEZ1G	CA	4 Gallons	32.0	107.95

### OE 10W-30 Synthetic Motor Oil

API Service SN, SM... • ILSAC GF-5, 4...

STOCK#	UNITS	PKG./SIZE	WT.LBS.	COST
OETQT	EA	1 Quart	2.0	7.05
OETQT	CA	12 Quarts	24.0	83.00

### OE 5W-20 Synthetic Motor Oil

API Service SN, SM... • ILSAC GF-5, 4... • GM dexos1™

STOCK#	UNITS	PKG./SIZE	WT.LBS.	COST
OEMQT	EA	1 Quart	2.0	7.05
OEMQT	CA	12 Quarts	24.0	82.95
OEM1G	EA	1 Gallon	7.8	27.40
OEM1G	CA	4 Gallons	31.2	107.95

### OE 5W-30 Synthetic Motor Oil

API Service SN, SM... • ILSAC GF-5, 4... • GM dexos1™

STOCK#	UNITS	PKG./SIZE	WT.LBS.	COST
OEFQT	EA	1 Quart	2.0	7.05
OEFQT	CA	12 Quarts	24.0	82.95
OEF1G	EA	1 Gallon	7.8	27.40
OEF1G	CA	4 Gallons	31.2	107.95

### Tough-to-reach fill hole?

Order a flexible pour spout with your oil to make the job easier. Fits quarts and gallons.

STOCK#	COST
G1230	0.80



TO ORDER – Call 1-800-956-5695, 7 a.m. to 5 p.m. Central Time, M – F  
Free Shipping on Orders of \$100 or More (except in Alaska and Hawaii)

# PREMIUM PROTECTION FOR EUROPEAN VEHICLES

**SAPS** stands for sulfated ash, phosphorus and sulfur, which comprise a significant part of a motor oil's additive content. Because the vehicle emissions systems and aftertreatment devices of some European vehicles are sensitive to the SAPS content of oil, it is important to use an oil that meets the proper specification to ensure optimum engine protection and performance.

## European Car Formula Synthetic Motor Oil

Specially formulated for the lubrication needs of European gasoline and diesel cars and light trucks. Blended with advanced AMSOIL synthetic base stocks, premium additives and broad viscosity ratings, allowing motorists to take advantage of the maximum extended drain intervals recommended by European automakers while providing outstanding protection and performance.

**Designed for the specific demands  
of European gas and diesel engines.**

- Outstanding All-Season Performance
- Engineered for Maximum Fuel Economy
- Enhanced Turbocharger Protection
- Low-, Mid- and Full-SAPS Formulations



# EUROPEAN CAR FORMULA



## European Car Formula 5W-30 Low-SAPS Synthetic Motor Oil

VW 504.00/507.00 • MB 229.51 • BMW LL-04 •  
Porsche C30

STOCK#	UNITS	PKG./SIZE	WT.LBS.	COST
AELQT	EA	1 Quart	2.1	11.95
AELQT	CA	12 Quarts	25.2	141.65
AEL5L	EA	(1) 5 Liter	11.1	62.85
AEL5L	CA	(2) 5 Liters	22.2	125.05

## European Car Formula 5W-40 Mid-SAPS Synthetic Motor Oil

ACEA C3 • API CF, SN, SM... • BMW Longlife-04 • Chrysler  
MS-10850 (supersedes MS-10896) • Ford WSS-M2C917-A  
• GM dexos2™ (supersedes LL-A-025 and LL-B-025) •  
MB-Approval 229.51 • Porsche A40 • VW 502.00/505.01 •  
Renault RIN0700/RIN0710

STOCK#	UNITS	PKG./SIZE	WT.LBS.	COST
AFLQT	EA	1 Quart	2.1	11.10
AFLQT	CA	12 Quarts	25.2	131.45
AFL5L	EA	(1) 5 Liter	11.1	58.35
AFL5L	CA	(2) 5 Liters	22.2	116.10

## European Car Formula 5W-40 Full-SAPS Synthetic Motor Oil

ACEA A3/B3, A3/B4 • API SN/SM... • BMW LL-01 •  
MB 229.3/229.5 • Porsche A40 • Renault 0710, 0700 •  
VW 502.00/505.00

STOCK#	UNITS	PKG./SIZE	WT.LBS.	COST
EFMOT	EA	1 Quart	2.1	8.35
EFMOT	CA	12 Quarts	25.2	98.50
EFM5L	EA	(1) 5 Liter	11.1	43.85
EFM5L	CA	(2) 5 Liters	22.2	87.10

TO ORDER – Call 1-800-956-5695, 7 a.m. to 5 p.m. Central Time, M – F  
Free Shipping on Orders of \$100 or More (except in Alaska and Hawaii)

# BUILD IT.

# CRUISE IT.



## Assembly Lube

Formulated to cling to engine parts and provide exceptional wear protection while inhibiting rust and corrosion in newly built or rebuilt four-stroke engines. Designed to dissolve in oil, helping eliminate oil port clogging and deposit formation.

STOCK#	UNITS	PKG./SIZE	WT.LBS.	COST
EALTB	EA	(1) 4-oz. Tube	0.3	8.25
EALTB	CA	(12) 4-oz. Tubes	3.6	97.50

## Break-In Oil

Formulated without friction modifiers to allow for quick and efficient piston ring seating in new and rebuilt high-performance and racing engines. Contains anti-wear additives to protect cam lobes, lifters and rockers during the critical break-in period when wear rates are highest, while increased film strength protects rod and main bearings from damage.

STOCK#	UNITS	PKG./SIZE	WT.LBS.	COST
BRKQT	EA	1 Quart	2.1	8.10
BRKQT	CA	12 Quarts	25.2	95.80

## Z-ROD® Synthetic Motor Oil

High-zinc, high-phosphorus formulation engineered specifically for classic cars and performance vehicles. Provides extra protection for flat-tappet cams, lifters, rockers and other areas susceptible to wear. Unique blend of rust and corrosion inhibitors ensures maximum protection during long-term storage.

### Z-ROD 10W-30 Synthetic Motor Oil

API SL, SJ...

STOCK#	UNITS	PKG./SIZE	WT.LBS.	COST
ZRTQT	EA	1 Quart	2.1	10.75
ZRTQT	CA	12 Quarts	25.2	127.20

### Z-ROD 20W-50 Synthetic Motor Oil

API SL, SJ...

STOCK#	UNITS	PKG./SIZE	WT.LBS.	COST
ZRFQT	EA	1 Quart	2.1	11.15
ZRFQT	CA	12 Quarts	25.2	132.05

# RACE IT.



PRODUCTS THE  
PROS USE



*"It's not uncommon for us to see engine temps over 300°. There's no other oil I'd trust on race day."*

Scott Douglas  
11 World Championships

## DOMINATOR® Synthetic Racing Oil

Provides superior protection and performance for high-rpm, high-temperature racing and high-performance applications. Shear-stable formulation to protect critical engine components for the duration of the race. Effectively reduces friction for maximum power and cooler engine temperatures, resulting in improved lap times and longer-lasting equipment.

### DOMINATOR 5W-20 Synthetic Racing Oil

STOCK#	UNITS	PKG./SIZE	WT.LBS.	COST
RD200T	EA	1 Quart	2.0	12.75
RD20QT	CA	12 Quarts	24.0	151.05

### DOMINATOR 10W-30 Synthetic Racing Oil

STOCK#	UNITS	PKG./SIZE	WT.LBS.	COST
RD30QT	EA	1 Quart	2.0	12.80
RD30QT	CA	12 Quarts	24.0	151.90

### DOMINATOR 15W-50 Synthetic Racing Oil

STOCK#	UNITS	PKG./SIZE	WT.LBS.	COST
RD50QT	EA	1 Quart	2.1	13.40
RD50QT	CA	12 Quarts	25.2	159.20
RD501G	EA	1 Gallon	8.0	52.55
RD501G	CA	4 Gallons	32.0	208.55

### DOMINATOR SAE 60 Synthetic Racing Oil

STOCK#	UNITS	PKG./SIZE	WT.LBS.	COST
RD60QT	EA	1 Quart	2.1	13.85
RD60QT	CA	12 Quarts	25.2	164.30



TO ORDER – Call 1-800-956-5695, 7 a.m. to 5 p.m. Central Time, M – F  
Free Shipping on Orders of \$100 or More (except in Alaska and Hawaii)

AMO



ARO



## Premium Protection Synthetic Motor Oil

Formulated for use in gasoline engines and on- and off-road diesel engines not equipped with diesel particulate filters (DPFs). Offers excellent wear protection. Ideal for applications where the extra protection of a high-zinc formula is desired, including classic cars and motor homes. Excellent for flat-tappet, high-performance, heavy-duty and high-mileage applications.

### Premium Protection 10W-40 Synthetic Motor Oil

API Service SL, SJ..., CF, CI-4+ • JASO MA (motorcycle wet clutch) • ISO-L-EMA

STOCK#	UNITS	PKG./SIZE	WT.LBS.	COST
AMOOT	EA	1 Quart	2.1	11.05
AMOOT	CA	12 Quarts	25.2	130.70
AMOTG	EA	1 Gallon	8.0	43.10
AMOTG	CA	4 Gallons	32.0	170.55
AMOTP	EA	(1) 2.5 Gallon	19.5	104.80
AMOTP	CA	(2) 2.5 Gallons	39.0	207.50

### Premium Protection 20W-50 Synthetic Motor Oil

API Service SL, SJ..., CF, CI-4+ • JASO MA (motorcycle wet clutch) • ISO-L-EMA

STOCK#	UNITS	PKG./SIZE	WT.LBS.	COST
AROOT	EA	1 Quart	2.1	11.15
AROOT	CA	12 Quarts	25.2	132.15
ARO1G	EA	1 Gallon	8.1	43.55
ARO1G	CA	4 Gallons	32.4	172.50

## Formula 4-Stroke® Power Sports Synthetic Motor Oil

Specially formulated to provide serious protection and performance in recreational four-stroke motors, including ATVs and snowmobiles. Broad 0W-40 viscosity rating provides superior protection in both hot and cold temperature extremes.

SAE 0W-40 • API Service SG, SJ, SL/CF • JASO MA/MA2 • ISO-L-EMA2

STOCK#	UNITS	PKG./SIZE	WT.LBS.	COST
AFFQT	EA	1 Quart	2.0	11.95
AFFQT	CA	12 Quarts	24.0	141.65

## Formula 4-Stroke® Synthetic Small Engine Oil

Provides superior protection in the hot-temperature, severe-service operating conditions of both gasoline- and diesel-fueled small engines. Exceeds both 10W-30 multi-grade and SAE 30 straight-grade viscosity requirements. Provides excellent all-season protection and performance. Meets the demands of homeowner, commercial and industrial applications, improving productivity and reducing maintenance costs through superior engine protection.

Riding and Push Lawnmowers • Snowblowers • Generators • Pumps • Welders • Skid-Steers • Compressors • and more

API SL, SJ, SH, SG • API CF, CD • JASO MA/MA2 • ISO-L-EMA2

STOCK#	UNITS	PKG./SIZE	WT.LBS.	COST
ASEQT	EA	1 Quart	2.0	9.25
ASEQT	CA	12 Quarts	24.0	109.30

AFF



ASE





- Outboard
- Inboard
- Inboard/Outboard (I/O)
- Personal Watercraft

## Formula 4-Stroke® Marine Synthetic Motor Oil

Formulated specifically for maximum wear protection in four-stroke gasoline-fueled engines used in marine applications. Certified to meet NMMA FC-W Catalyst Compatible performance specifications. Meets "Warranty Certified" status of engine manufacturers.

### Formula 4-Stroke Marine 10W-30 Synthetic Motor Oil

API SM • NMMA FC-W Catalyst Compatible (Registration #FC-00358P)

STOCK#	UNITS	PKG./SIZE	WT.LBS.	COST
WCTQT	EA	1 Quart	2.0	11.05
WCTQT	CA	12 Quarts	24.0	130.80

### Formula 4-Stroke Marine 10W-40 Synthetic Motor Oil

API SM • NMMA FC-W Catalyst Compatible (Registration #FC-00357P)

STOCK#	UNITS	PKG./SIZE	WT.LBS.	COST
WCFQT	EA	1 Quart	2.0	11.80
WCFQT	CA	12 Quarts	24.0	139.70



## Formula 4-Stroke® Synthetic Scooter Oil

Formulated to meet the special needs of today's high-tech air- and water-cooled four-stroke motorized scooters, offering advanced wear protection and friction reduction for longer equipment life and cooler operating temperatures. Friction modifier-free formulation ensures wet-clutch compatibility and smooth clutch operation. Special anti-corrosion additive package provides long-term protection during periods of inactivity and storage.

API SG, SL/CF - JASO MA/MA2 - ISO-L-EMA2

STOCK#	UNITS	PKG./SIZE	WT.LBS.	COST
ASOQT	EA	1 Quart	2.0	9.25
ASOQT	CA	12 Quarts	24.0	109.10





## SYNTHETIC ATV/UTV OILS

Formulated to deliver upgraded performance compared to original equipment manufacturer (OEM) fluids for hard-working, hard-riden ATVs and UTVs. Outstanding severe-service performance allows riders to confidently and safely push their machines to the limit.

### 10W-40 Synthetic ATV/UTV Engine Oil

Recommended for use in Kawasaki®, Suzuki®, Can-Am®, Honda®, Yamaha®, Kubota®, John Deere® and other ATVs and UTVs calling for a 10W-40 engine oil. Protects hot, high-revving engines against wear for worry-free operation.

STOCK#	UNITS	PKG./SIZE	WT. LBS.	COST
AUV40QT	EA	1 Quart	2.0	12.75
AUV40QT	CA	12 Quarts	24.0	151.45

### 5W-50 Synthetic ATV/UTV Engine Oil

Formulated specifically for use in Polaris® Ranger, RZR and Sportsman UTVs and ATVs. Protects hot, high-revving engines against wear for worry-free operation.

STOCK#	UNITS	PKG./SIZE	WT. LBS.	COST
AUV50QT	EA	1 Quart	2.0	13.40
AUV50QT	CA	12 Quarts	24.0	159.25

## Synthetic ATV/UTV Transmission and Differential Fluid

Recommended for ATV and UTV transmissions and front and rear differentials. Boasts outstanding shear stability and resists extreme pressures. Protects heavily loaded, high-torque gears and bearings against wear for worry-free operation.

STOCK#	UNITS	PKG./SIZE	WT. LBS.	COST
AUDTOT	EA	1 Quart	2.0	13.50
AUDTOT	CA	12 Quarts	24.0	160.60

## Synthetic ATV/UTV Front Drive Fluid

Recommended for use in Polaris ATV and UTV front differentials and hubs calling for Polaris Demand Drive Fluid. Boasts outstanding shear stability and resists extreme pressures. Protects heavily loaded, high-torque gears and bearings against wear for worry-free operation.

STOCK#	UNITS	PKG./SIZE	WT. LBS.	COST
AUFDOT	EA	1 Quart	2.0	13.90
AUFDOT	CA	12 Quarts	24.0	164.85

# OUT-FRONT PERFORMANCE



DB40

**NEW!**



DB50

**NEW!**



DB60

**NEW!**



## SYNTHETIC DIRT BIKE OILS

Friction-modifier-free formulation delivers confidence in clutch feel. Wet-clutch compatible. Advanced synthetic technology for maximum horsepower and wear protection. Superior film strength to protect high-torque transmissions.

### 10W-40 Synthetic Dirt Bike Oil

JASO MA · API SG, SJ, SH, SL

Recommended for use in Honda, Yamaha, Kawasaki, Suzuki, Husqvarna® and other dirt bikes where 10W-40 motorcycle oil is required. Recommended for separate-sump applications, including the Honda CRF and many two-stroke dirt bikes.

STOCK#	UNITS	PKG./SIZE	WT. LBS.	COST
DB40QT	EA	1 Quart	2.0	13.35
DB40QT	CA	12 Quarts	24.0	158.65

### 10W-50 Synthetic Dirt Bike Oil

JASO MA · API SG, SJ, SH, SL

Recommended for use in KTM®, Kawasaki, Yamaha, Suzuki, Husqvarna and other dirt bikes where 10W-50 motorcycle oil is required. Use in place of Motorex® Cross Power 4T.

STOCK#	UNITS	PKG./SIZE	WT. LBS.	COST
DB50QT	EA	1 Quart	2.0	13.80
DB50QT	CA	12 Quarts	24.0	163.65

### 10W-60 Synthetic Dirt Bike Oil

JASO MA · API SG, SJ, SH, SL

Recommended for use in KTM, Husqvarna and other dirt bikes where 10W-60 motorcycle oil is required. Use in place of Motorex Cross Power 4T.

STOCK#	UNITS	PKG./SIZE	WT. LBS.	COST
DB60QT	EA	1 Quart	2.0	14.15
DB60QT	CA	12 Quarts	24.0	168.00

TO ORDER – Call 1-800-956-5695, 7 a.m. to 5 p.m. Central Time, M – F  
Free Shipping on Orders of \$100 or More (except in Alaska and Hawaii)

# RIDE HARD.



## 20W-50 Synthetic Motorcycle Oil

API Service SG, SL/CF, CG-4 • JASO MA/MA2  
(motorcycle wet clutch) • ISO-L-EMA2

Recommended for use in Harley-Davidson®, Buell®, KTM®, Ducati®, Aprilia®, BMW®, Triumph® and other motorcycle engines. Superior synthetic formulation provides long service life and maximum protection against engine wear. Superior shear stability provides outstanding protection for high-performance engines, transmissions and primary chaincases. No friction modifiers. Wet-clutch compatible.

STOCK #	UNITS	PKG./SIZE	WT. LBS.	COST
MCVQT	EA	1 Quart	2.1	12.85
MCVQT	CA	12 Quarts	25.2	152.55
MCV1G	EA	1 Gallon	8.0	50.40
MCV1G	CA	4 Gallons	32.0	199.75

## SAE 60 Synthetic Motorcycle Oil

API Service SG, SL/CF, GL-1 • JASO MA/MA2  
(motorcycle wet clutch) • ISO-L-EMA2

Recommended for use in Harley-Davidson and big-bore motorcycles that require a 60-weight oil. Superior synthetic formulation provides long service life and maximum protection against engine wear. Superior shear stability provides outstanding protection for high-performance engines and transmissions. No friction modifiers. Wet-clutch compatible.

STOCK #	UNITS	PKG./SIZE	WT. LBS.	COST
MCSQT	EA	1 Quart	2.0	13.15
MCSQT	CA	12 Quarts	24.0	156.00

**NEW!**



## 20W-40 Synthetic V-Twin Motorcycle Oil

API SM • JASO MA

Recommended for use in Victory® and model-year 2013 and newer Indian® motorcycles. Superior synthetic formulation provides long service life and maximum protection against engine wear. Superior shear stability provides outstanding protection for high-performance engines and transmissions. Wet-clutch compatible. First full-synthetic alternative to manufacturer-branded semi-synthetic oils.

STOCK#	UNITS	PKG./SIZE	WT.LBS.	COST
MVIQT	EA	1 Quart	2.1	12.50
MVIQT	CA	12 Quarts	24.9	148.50

# RUN COOL.™



MVT

**NEW!**



## Synthetic V-Twin Transmission Fluid

Purpose-built for bikers who prefer a dedicated transmission fluid over a multi-purpose lubricant. Durable formulation and extreme-pressure additives protect against gear and bearing wear. Finely tuned viscometrics and frictional properties provide smooth shifts, helping riders avoid missed shifts. Helps eliminate loud thunks and gear noise.

STOCK #	UNITS	PKG./SIZE	WT. LBS.	COST
MVTQT	EA	1 Quart	2.1	14.05
MVTQT	CA	12 Quarts	25.2	166.90

MVP

**NEW!**



## Synthetic V-Twin Primary Fluid

Purpose-built for bikers who prefer a dedicated primary chaincase lubricant over a multi-purpose lubricant. Balanced additive system provides consistent clutch performance and feel. Helps riders easily find neutral and promotes smooth acceleration. Superior load-holding capacity helps prevent clutch slip for confident takeoffs, helping riders avoid killing their engines. Heavy dose of anti-wear additives protects the gears, chain and compensator bearing from wear. Resists thermal breakdown and reduces drag at low temperatures.

STOCK #	UNITS	PKG./SIZE	WT. LBS.	COST
MVPQT	EA	1 Quart	2.1	12.55
MVPQT	CA	12 Quarts	25.2	149.05

TO ORDER – Call 1-800-956-5695, 7 a.m. to 5 p.m. Central Time, M – F  
Free Shipping on Orders of \$100 or More (except in Alaska and Hawaii)



MCF



## 10W-40 Synthetic Motorcycle Oil

API Service SG, SL/CF • JASO MA/MA2 (motorcycle wet clutch) • ISO-L-EMA2

Recommended for use in Honda®, Yamaha®, Kawasaki®, Victory®, BMW® and other motorcycles where 10W-40 motorcycle oil is required. Superior synthetic formulation provides long service life and maximum protection against engine wear. Superior shear stability provides outstanding protection for high-performance engines and transmissions. No friction modifiers. Wet-clutch compatible.

STOCK#	UNITS	PKG./SIZE	WT. LBS.	COST
MCFOT	EA	1 Quart	2.1	12.50
MCFOT	CA	12 Quarts	25.2	148.40
MCF1G	EA	1 Gallon	8.0	49.00
MCF1G	CA	4 Gallons	32.0	194.20

## 10W-30 Synthetic Motorcycle Oil

API Service SG, SL/CF, CG-4 • JASO MA/MA2 (motorcycle wet clutch)  
• ISO-L-EMA2

Recommended for use in Honda, Yamaha, Suzuki®, Kawasaki and other motorcycles where 10W-30 motorcycle oil is required. Superior synthetic formulation provides long service life and maximum protection against engine wear. Superior shear stability delivers outstanding protection for high-performance engines and transmissions. No friction modifiers. Wet-clutch compatible.

MCT



STOCK#	UNITS	PKG./SIZE	WT. LBS.	COST
MCTOT	EA	1 Quart	2.0	12.15
MCTOT	CA	12 Quarts	24.0	144.15





## Briggs & Stratton Synthetic 4T Racing Oil

Formulated by AMSOIL specifically for stock and modified small-displacement air-cooled racing engines used in kart, junior drag, quarter midget and other racing applications and recommended for any four-stroke air-cooled competition engine. Tested and validated by Briggs & Stratton and AMSOIL.



- **Designed** to help racers elicit the most horsepower and longest life from their engines.
- **Resists** the elevated heat common to high-performance racing engines.
- **Reduces** energy loss due to friction.
- **Provides** strong anti-wear properties.
- **Resists** foam.
- **Protects** against the formation of corrosion between races and during longer storage periods.

STOCK #	UNITS	PKG./SIZE	WT. LBS.	COST
GBS2960	EA	1 Quart	2.1	15.90
GBS2960	CA	12 Quarts	25.2	186.40



Briggs & Stratton, the world's largest small-engine manufacturer, chose AMSOIL to formulate the motor oil it recommends to protect its most demanding racing engines. Imagine what AMSOIL can do for you.

**Accept no substitutes.**

TO ORDER – Call 1-800-956-5695, 7 a.m. to 5 p.m. Central Time, M – F  
Free Shipping on Orders of \$100 or More (except in Alaska and Hawaii)



HPM

**WARRANTY  
SECURE**

## HP Marine™ Synthetic 2-Stroke Oil

Excellent for all two-stroke outboard motors, personal watercraft and anywhere NMMA TC-W3 and API-TC oils are specified. Recommended for Evinrude® E-TEC® factory-lean setting. Engineered with custom-designed synthetic base stocks to reduce friction and wear. Fortified with MAXDOSE™ system of advanced additives for “super-clean” operation. Low smoke, low odor, low aquatic toxicity. Injector use or 50:1 pre-mix.

### TC-W3 / API TC

STOCK#	UNITS	PKG./SIZE	WT. LBS.	COST
HPMQT	EA	1 Quart	2.0	9.85
HPMQT	CA	12 Quarts	24.0	116.80
HPM1G	EA	1 Gallon	7.9	38.45
HPM1G	CA	4 Gallons	31.6	151.95

## INTERCEPTOR® Synthetic 2-Stroke Oil

Engineered specifically for two-stroke snowmobiles. Anti-scuff/anti-wear formulation provides excellent lubricity and cleanliness properties. Prevents piston skirt scuffing, ring sticking and exhaust power valve sticking. Low-smoke, low-odor formulation ensures riders are not “smoked out.” Injector use or 50:1 pre-mix.

### API TC

STOCK#	UNITS	PKG./SIZE	WT. LBS.	COST
AITQT	EA	1 Quart	2.1	11.10
AITQT	CA	12 Quarts	25.2	131.50
AIT1G	EA	1 Gallon	8.2	43.35
AIT1G	CA	4 Gallons	32.8	171.60



AIT

MAXIMUM  
RELIABILITY

Meets the performance requirements of Polaris®, Arctic Cat® and Ski-Doo® two-stroke snowmobiles.

EXHAUST SIDE



Piston coating largely intact.

The piston rings earned perfect 10 merit ratings, demonstrating no ring sticking and excellent performance.

The piston skirts exhibited 0.00% scuffing, proving INTERCEPTOR's outstanding friction-reduction capabilities.

*Complete results at [amsoil.com/proof](http://amsoil.com/proof)*

## Severe-Duty Dyno Results

INTERCEPTOR® Synthetic 2-Stroke Oil was installed in a 2012 Ski-Doo® Renegade X snowmobile equipped with a Rotax® E-TEC® 800R engine. Following a 50-hour severe-duty dyno session designed to simulate a full season of real-world conditions, the engine was disassembled and rated for wear and deposits by a calibrated ASTM rater. Results prove INTERCEPTOR virtually eliminated wear and deposits throughout the entire engine.

MAXIMUM  
PERFORMANCE

TDR



## DOMINATOR® Synthetic 2-Stroke Racing Oil

Complex formulation specially engineered to address the heat, pressure and friction of race-engineered two-stroke engines, both on and off the track. Purpose-built for outstanding film strength and lubricity. Anti-friction, anti-scuff formula for maximum power and exceptional piston protection.

API TC	STOCK#	UNITS	PKG./SIZE	WT. LBS.	COST
	TDRQT	EA	1 Quart	2.1	11.10
	TDRQT	CA	12 Quarts	25.2	131.55
	TDR1G	EA	1 Gallon	8.2	43.35
	TDR1G	CA	4 Gallons	32.8	171.65

### PRODUCTS THE PROS USE

*"Ice oval racing is the most extreme test for a snowmobile engine, and DOMINATOR meets the challenge every time."*

— P.J. Wanderscheid | 4X AMSOIL Eagle River World Champion



## SABER® Professional Synthetic 2-Stroke Oil

Withstands high heat and stress to protect handheld power equipment engines against wear and harmful deposits. Smoke-free operation. Can be mixed at conventional mix ratios (32:1, 40:1, 50:1) or the SABER Ratio™ (80:1, 100:1), offering the convenience of one mix ratio for all applications.

ISO-L-EGD / API TC / JASO FD

STOCK#	UNITS	PKG./SIZE	WT. LBS.	COST
ATPBC	EA	(1) 8-oz. Bottle	0.7	4.80
ATPBC	CA	(12) 8-oz. Bottles	8.4	56.00
ATPPK	EA	(1) 1.5-oz. Pillow Pack	0.1	1.55
ATPPK	CA	(48) 1.5-oz. Pillow Packs	5.1	70.40
ATPQT	EA	1 Quart	2.1	12.05
ATPQT	CA	12 Quarts	25.2	143.25
ATPBA	EA	(1) 3.5-oz. Bottle	0.4	2.70
ATPBA	CA	(12) 3.5-oz. Bottles	4.8	30.25
ATP1G	EA	1 Gallon	8.0	47.25
ATP1G	CA	4 Gallons	32.0	187.30

## Outboard 100:1 Pre-Mix Synthetic 2-Stroke Oil

Contains lower-temperature dispersants for water-cooled outboard motors. Recommended for 100:1 mix ratios in normal service (1.3 oz. per gallon).

TC-W3

STOCK#	UNITS	PKG./SIZE	WT. LBS.	COST
ATOBC	EA	(1) 8-oz. Bottle	0.7	5.05
ATOBC	CA	(12) 8-oz. Bottles	8.4	59.15
ATOQT	EA	1 Quart	2.2	13.10
ATOQT	CA	12 Quarts	26.4	155.65

ATP



SABER® Ratio™  
80:1 ... 1.6 oz. ... 1 US GAL.  
SABER® Ratio™  
100:1 ... 1.3 oz. ... 1 US GAL.

ATO



AIO



## Synthetic 2-Stroke Injector Oil

Offers the convenience of one formula for the tough conditions of all two-stroke recreational equipment requiring NMMA TC-W3 and API TC two-stroke oil. Effectively minimizes wear and deposits that can damage internal components and significantly shorten engine life. Provides cold-temperature fluidity for easy starts. Fortified with high-temperature detergent and dispersant additives to maintain engine cleanliness. Injector use or 50:1 pre-mix.

### TC-W3 / API TC

STOCK#	UNITS	PKG./SIZE	WT. LBS.	COST
AIOQT	EA	1 Quart	2.0	8.70
AIOQT	CA	12 Quarts	24.0	102.70
AIO1G	EA	1 Gallon	7.9	34.00
AIO1G	CA	4 Gallons	31.6	134.30

TCC



## Synthetic Chaincase & Gear Oil

Provides superior protection and performance for enclosed chains. Ideal for snowmobiles, ATVs and general equipment. Extreme-pressure additives provide extra wear protection. Extends chain life, repels water and inhibits rust, oxidation and foam. Superior low-temperature starting, performance and protection.

STOCK#	UNITS	PKG./SIZE	WT. LBS.	COST
TCCCN	EA	(1) 16-oz. Bottle	1.3	9.60
TCCCN	CA	(6) 16-oz. Bottles	7.8	56.60
TCC05	EA	(1) 5-gal. Pail	32.4	205.50

STL



## Shock Therapy® Suspension Fluid

Formulated for maximum stability and performance in high-performance fork and shock applications. Effectively controls friction and heat and significantly reduces wear and scuffing. Viscosity remains constant and foam and aeration are kept to a minimum, limiting shock fade and inconsistent dampening. Offers superior performance in temperature extremes.

### Shock Therapy Suspension Fluid

#### Lightweight #5

STOCK#	UNITS	PKG./SIZE	WT. LBS.	COST
STLQT	EA	1 Quart	1.9	12.70
STLQT	CA	12 Quarts	22.8	151.10
STL05	EA	(1) 5-gal. Pail	37.7	241.00

AMSOIL STL #5 is recommended for applications that demand quick rebounds under extreme temperatures.

STM



### Shock Therapy Suspension Fluid

#### Medium #10

STOCK#	UNITS	PKG./SIZE	WT. LBS.	COST
STMQT	EA	1 Quart	2.1	12.55
STMQT	CA	12 Quarts	25.2	148.55
STM05	EA	(1) 5-gal. Pail	38.1	236.85

AMSOIL STM #10 is recommended for applications that require more dampening and slower rebounds.

22

TO ORDER – Call 1-800-956-5695, 7 a.m. to 5 p.m. Central Time, M – F  
Free Shipping on Orders of \$100 or More (except in Alaska and Hawaii)

# DELIVERING THE POWER OF SYNTHETICS



Lavon Miller,  
2014 Diesel Power  
Challenge Champion

## Premium Synthetic Diesel Oil

The premium choice for model-year 2007 and newer diesel engines requiring API CJ-4 emission quality oil standards. Also recommended for pre-2007 diesel engines. Incredibly shear-stable to withstand the stress of heat, soot and acids and help prevent deposits, wear and corrosion. Broad viscosity range offers superior protection over a wide temperature range. Effectively reduces emissions by resisting oil consumption, while improving fuel efficiency. Recommended for up to three times the original equipment manufacturer's drain interval recommendation in diesel applications, not to exceed 50,000 miles/600 hours or one year, whichever comes first.\* Recommended for up to two times the original equipment manufacturer's drain interval recommendation in gasoline applications, not to exceed 15,000 miles or one year, whichever comes first. Compatible with all exhaust treatment devices and vehicles equipped with turbochargers. Designed to extend the service life of particulate filters.

\*Due to fuel dilution issues, extended drain intervals are not recommended for 2007-2009 Caterpillar C13 and C15 on-highway engines or 2007-present Dodge, Ford and GM LMM light-duty diesel pickups. See OE Synthetic Diesel Oil on pg. 24.

### Premium 5W-40 Synthetic Diesel Oil

API licensed CJ-4, CI-4+, CF, SN, SM • ACEA E7, E9 • Mack EO-O • DDC 93K218 • Caterpillar ECF-3, ECF-2, ECF-1-a • Cummins CES 20081 • Volvo VDS-4, VDS-3 • MB 228.31 • MS 10902 • MTU Type I, II, 2.1 • MAN 3275, 3575 • JASO DH-2 • Global DHD-1 • Renault RLD-3 • Ford WSS-M2C171E

STOCK#	UNITS	PKG./SIZE	WT. LBS.	COST
DEOQT	EA	1 Quart	2.1	11.05
DEOQT	CA	12 Quarts	25.2	130.75
DEO1G	EA	1 Gallon	8.0	43.10
DEO1G	CA	4 Gallons	32.0	170.60
DEOTP	EA	(1) 2.5 Gallon	19.5	104.80
DEOTP	CA	(2) 2.5 Gallons	39.0	207.60

### Premium 15W-40 Synthetic Diesel Oil

API CJ-4, CI-4+, CF, SN, SM • ACEA E7, E9 • Mack EO-O • DDC 93K218 • Caterpillar ECF-3, ECF-2, ECF-1-a • Cummins CES 20081 • Volvo VDS-4, VDS-3 • MB 228.31 • MS 10902 • MTU Type I, II, 2.1 • MAN 3275, 3575 • JASO DH-2 • Global DHD-1 • Renault RLD-3

STOCK#	UNITS	PKG./SIZE	WT. LBS.	COST
DMEQT	EA	1 Quart	2.1	10.85
DMEQT	CA	12 Quarts	25.2	128.40
DME1G	EA	1 Gallon	8.0	42.30
DME1G	CA	4 Gallons	32.0	167.50
DMETP	EA	(1) 2.5 Gallon	19.5	102.90
DMETP	CA	(2) 2.5 Gallons	39.0	203.75

TO ORDER – Call 1-800-956-5695, 7 a.m. to 5 p.m. Central Time, M – F  
Free Shipping on Orders of \$100 or More (except in Alaska and Hawaii)



OED



OEC



## OE Synthetic Diesel Oil

Provides excellent protection and performance in both on- and off-road diesel engines for the original equipment manufacturer's recommended drain interval. Suitable for both modern and older diesel applications requiring API CJ-4 specifications. Exceeds the higher performance demands of modern engines and withstands the stress of heat, soot and acids to help prevent deposits, wear and corrosion. Developed to address fuel dilution issues with 2007 to present Dodge, Ford and GM LMM light-duty diesel pickups.

### OE 15W-40 Synthetic Diesel Oil

API licensed CJ-4, CI-4+, CF, SN, SM • ACEA E9-08, E7-08 • DDC 93K218 • Cummins CES 20081 • MB 228.31 • CAT ECF-3, ECF-2, ECF-1-a • Mack EO-O • Volvo VDS-4, VDS-3 • MAN 3275, 3575 • Renault RLD-3 • MTU Type I, II, 2.1

STOCK#	UNITS	PKG./SIZE	WT. LBS.	COST
OEDQT	EA	1 Quart	2.1	7.75
OEDQT	CA	12 Quarts	25.2	91.50
OED1G	EA	1 Gallon	8.0	30.30
OED1G	CA	4 Gallons	32.0	119.40
OEDTP	EA	(1) 2.5 Gallon	19.5	73.25
OEDTP	CA	(2) 2.5 Gallons	39.0	144.50

### OE 10W-30 Synthetic Diesel Oil

API licensed CJ-4, CI-4+, CF, SN, SM • ACEA E9-08, E7-08 • Cummins CES 20081 • MB 228.31 • CAT ECF-3, ECF-2, ECF-1-a • Mack EO-O • Volvo VDS-4, VDS-3 • MAN 3275, 3575 • Renault RLD-3 • MTU Type I, II, 2.1

STOCK#	UNITS	PKG./SIZE	WT. LBS.	COST
OECQT	EA	1 Quart	2.1	7.70
OECQT	CA	12 Quarts	25.2	90.50
OEC1G	EA	1 Gallon	8.0	29.95
OEC1G	CA	4 Gallons	32.0	118.00
OECTP	EA	(1) 2.5 Gallon	19.5	72.45
OECTP	CA	(2) 2.5 Gallons	39.0	142.85

## Series 3000 5W-30 Synthetic Heavy Duty Diesel Oil

Engineered for on- and off-road diesel engines not equipped with diesel particulate filters (DPF). Also for all gasoline engines recommending API SL specifications, including turbocharged vehicles. Delivers better wear protection than other popular diesel oils and effectively reduces fuel consumption. Ideal for exhaust gas recirculating (EGR) engines. **Note:** For 2007 and newer on-road diesel vehicles, see Premium Synthetic Diesel Oil on pg. 23 and OE Synthetic Diesel Oil on pg. 24.

API CI-4+/CI-4/CH-4/CF/CF-2/SL/SJ • Global DHD-1 • ACEA A3/B3, E2, E3, E5, E7 • JASO DH-1 • Mack EO-M, EO-N • DDC 93K214 • Caterpillar ECF-1-a, ECF-2 • Cummins CES 20076, 20077, 20078 • Volvo VDS-3, VDS-2 • MB 228.1, 228.3, 229.1 • MAN 271, 3275 • MTU Type II

STOCK#	UNITS	PKG./SIZE	WT. LBS.	COST
HDDQT	EA	1 Quart	2.1	12.10
HDDQT	CA	12 Quarts	25.2	143.35
HDD1G	EA	1 Gallon	8.0	47.30
HDD1G	CA	4 Gallons	32.0	187.45
HDDTP	EA	(1) 2.5 Gallon	19.6	115.20
HDDTP	CA	(2) 2.5 Gallons	39.2	228.35

ADVANCED  
FUEL EFFICIENT FORMULA

HDD



AME



## 15W-40 Synthetic Heavy Duty Diesel and Marine Oil

Engineered for on- and off-road diesel engines not equipped with diesel particulate filters (DPF). High 12 TBN controls acids from combustion blow-by and exhaust gas recirculation (EGR). High levels of detergency and dispersancy additives control soot thickening, oxidation and wear. Provides up to three times the original equipment manufacturer's drain interval recommendation in diesel applications, not to exceed 50,000 miles/600 hours or one year, whichever comes first.

**Note:** For 2007 and newer on-road diesel vehicles, see Premium Synthetic Diesel Oil on pg. 23 and OE Synthetic Diesel Oil on pg. 24.

API CI-4/CI-4/CH-4/CF/CF-2/SL/SJ • Global DHD-1 • ACEA A3/B3, E2, E3, E5, E7 • JASO DH-1 • Mack EO-M, EO-N • DDC 93K214 • Caterpillar ECF-1-a, ECF-2 • Cummins CES 20076, 20077, 20078 • Volvo VDS-3, VDS-2 • MB 228.1, 228.3, 229.1 • MAN 271, 3275 • MTU Type II

STOCK#	UNITS	PKG./SIZE	WT. LBS.	COST
AMEQT	EA	1 Quart	2.1	10.20
AMEQT	CA	12 Quarts	25.2	120.60
AME1G	EA	1 Gallon	8.0	39.70
AME1G	CA	4 Gallons	32.0	157.15
AMETP	EA	(1) 2.5 Gallon	19.6	96.50
AMETP	CA	(2) 2.5 Gallons	39.2	190.95

ACD



## 10W-30/SAE 30 Synthetic Heavy Duty Diesel Oil

Exceeds both 10W-30 multi-grade and SAE 30 straight-grade viscosity requirements. Engineered for on- and off-road diesel engines not equipped with diesel particulate filters (DPF). Also recommended for gasoline engines requiring API SL or previous specifications. Excellent for heavy equipment and personal vehicles. Extends drain intervals. See the AMSOIL Product Information and Drain Interval Chart (G2281) for more information. **Note:** For 2007 and newer on-road diesel vehicles, see Premium Synthetic Diesel Oil on pg. 23 and OE Synthetic Diesel Oil on pg. 24.

API CI-4/CH-4/CF-2/CF/SL • Global DHD-1 • ACEA A3/B3, E3, E5 • DDC • Caterpillar ECF-1-a, ECF-2 • Cummins CES 20076, 20077, 20078 • Volvo VDS-3, VDS-2 • MB 228.1, 228.3, 229.1 • MAN 271, 3275 • MTU Type II • Ford WSS-M2C921-A

STOCK#	UNITS	PKG./SIZE	WT. LBS.	COST
ACD1G	EA	1 Gallon	8.1	39.65
ACD1G	CA	4 Gallons	32.4	157.00

## Oil Analysis

AMSOIL and its subsidiary OIL ANALYZERS INC.® provide state-of-the-art oil analysis service, allowing customers to monitor engine condition and maximize oil drain intervals. Customers receive detailed analysis reports via fax, email and online reporting. Expert consultation of oil condition is easily accessible by phone (877-458-3315) or email (info@oaitesting.com). Coolant and diesel fuel analysis is also available. For more information, see www.oaitesting.com.

STOCK#	PKG./SIZE	WT. LBS.	COST
KIT01	1 sample kit (includes two-way postage)	0.1	33.90
KIT02	1 sample kit (includes UPS shipping)	0.1	33.90
KIT06	1 sample kit	0.1	24.15
KIT14	1 value sample kit	0.1	19.15
G1206	Oil Suction Pump w/10-ft. hose	0.1	28.90
G1571	Replacement Hose 25-ft.	0.1	9.20

**Oil Analyzers**  
INC.

TO ORDER – Call 1-800-956-5695, 7 a.m. to 5 p.m. Central Time, M – F  
Free Shipping on Orders of \$100 or More (except in Alaska and Hawaii)

## Signature Series Synthetic Automatic Transmission Fluid

Provides reserve protection in fleet vehicles, heavy-duty pickups, work trucks and other severe-service applications that quickly break down other lubricants. Promotes maximum transmission performance and life by protecting against formation of harmful sludge in hot-running automatic transmissions. Retains viscosity in severe service to guard against wear to gears, clutch plates and other critical components. Outstanding cold-flow and frictional properties. Follow the vehicle manufacturer's normal-service drain interval in normal service or double the vehicle manufacturer's severe-service drain interval in severe service. Fuel-Efficient Synthetic Automatic Transmission Fluid is engineered to exceed the requirements of GM, Ford, Toyota and other manufacturers where low-viscosity oil is required.

### Handle More Heat With Confidence

Standard Severe Service

AMSOIL Severe Service

RESERVE PROTECTION

Change Interval - Miles



ATF

## Signature Series Multi-Vehicle Synthetic Automatic Transmission Fluid

Ford MERCON<sup>®</sup>, MERCON<sup>®</sup> V, ESP-M2C166-H • GM DEXRON<sup>®</sup> III • Chrysler ATF+4<sup>®</sup>, MOPAR<sup>®</sup> AS68RC • Allison C-4, TES-389 • Audi G 052 162, G 052 990, G 055 025 • BMW 7045E, LA 2634, LT 71141 • Honda ATF-Z1 (not CVT) • Hyundai SP-II and SP-III • Idemitsu K17 • JWS 3309, 3314, 3317 • Kia SP-II and SP-III, ATF Red-1 • MAN 339F, 339 V1, 339 V2, 339 Z1, Z2 & Z3 • Mazda ATF-M III, ATF-MV, ATF-FZ • Mercedes Benz 236.1, 236.2, 236.3, 236.5, 236.6, 236.7, 236.9, 236.10, 236.11, 236.81 • Mitsubishi SP-II and SP-III • Nissan Matic-D, Matic-J, Matic-K • Shell 3403, LA 2634 • Subaru ATF, ATF-HP • Suzuki 3314 & 3317 • Texaco ETL-7045E, ETL-8072B, N402 • Toyota Type T-III and T-IV • Voith 55.6335.XX (G607), 55.6336.XX (G1363) • Volvo 97340, 97341 • Volkswagen G 052 162, G 052 990, G 055 025 • ZF TE-ML 03D, 04D, 05L, 09, 11B, 14A, 14B, 14C, 16L, 17C • JASO 1-A

**Note:** Not for use with CVT or Ford Type F applications.

STOCK #	UNITS	PKG./SIZE	WT. LBS.	COST
ATFQT	EA	1 Quart	2.0	12.45
ATFQT	CA	12 Quarts	24.0	147.60
ATF1G	EA	1 Gallon	7.9	48.75
ATF1G	CA	4 Gallons	31.6	193.10
ATFTP	EA	(1) 2.5 Gallon	19.3	118.65
ATFTP	CA	(2) 2.5 Gallons	38.6	235.25

## Signature Series Fuel-Efficient Synthetic Automatic Transmission Fluid

Ford MERCON<sup>®</sup> LV, SP • GM DEXRON<sup>®</sup> VI • Aisin-Warner AW-1 • Audi G 055 005, G 055 162, G 060 162 • BMW 83 22 0 142 516, 83 22 2 152 426 • Honda DW-1<sup>®</sup> • Hyundai/Kia SP-IV, SPH-IV, SPH-IV-RR • JWS 3324 • Chrysler Mopar<sup>®</sup> PIN 68157995A (ZF 8 & 9 speed ATF) • Mitsubishi SP-IV, ATF J2 • Nissan Matic-S • Saab 93 165 147 • Shell M-1375.4, M-1375.5, M-1375.6, M-L 12108 • Toyota WS • Volkswagen G 055 005, G 055 162, G 060 162 • JASO 1-A • Mercedes Benz 236.12, 236.14 • Volvo 97342

**Note:** Not for use with CVT applications.

STOCK #	UNITS	PKG./SIZE	WT. LBS.	COST
ATLQT	EA	1 Quart	2.0	12.45
ATLQT	CA	12 Quarts	24.0	147.55
ATL1G	EA	1 Gallon	7.9	48.70
ATL1G	CA	4 Gallons	31.6	193.05
ATLTP	EA	(1) 2.5 Gallon	19.5	118.60
ATLTP	CA	(2) 2.5 Gallons	39.0	235.20



ATL

## OE Synthetic Automatic Transmission Fluid

Provides outstanding protection for passenger-car/light-truck transmissions throughout original equipment manufacturer (OEM)-recommended drain intervals. Resists wear to the transmission's valve body, gears, clutch plates and other vital parts. Guards against the harmful effects of thermal breakdown, resisting varnish formation that can stick valves and threaten transmission performance and life. Resists thickening and flows quickly for fast, reliable shifts during cold starts and maximum fuel efficiency. OE Fuel-Efficient Synthetic Automatic Transmission Fluid is engineered to exceed the requirements of GM, Ford, Toyota and other OEMs where low-viscosity oil is required.



## OE Multi-Vehicle Synthetic Automatic Transmission Fluid

Ford MERCON<sup>®</sup>, MERCON<sup>®</sup> V, ESP-M2C166-H • GM DEXRON<sup>®</sup> III • Chrysler MOPAR<sup>®</sup> AS68RC • Allison C-4, TES-389 • Audi G 052 162, G 052 990, G 055 025 • BMW 7045E, LA 2634, LT 71141 • Honda ATF-Z1 (not CVT) • Hyundai SP-II and SP-III • Idemitsu K17 • JWS 3309, 3314, 3317 • Kia SP-II and SP-III, ATF Red-1 • MAN 339F, 339 V1, 339 V2, 339 Z1 & 339 Z2 • Mazda ATF-M III, ATF-MV, ATF-FZ • Mercedes Benz 236.1, 236.2, 236.3, 236.5, 236.6, 236.7, 236.9, 236.10, 236.11, 236.81 • Mitsubishi SP-II and SP-III • Nissan Matic-D, Matic-J, Matic-K • Shell 3403, LA 2634 • Subaru ATF, ATF-H • Suzuki 3314 & 3317 • Texaco ETL-7045E, ETL-8072B, N402 • Toyota Type T-III and T-IV • Voith 55.6335.XX (G607), 55.6336.XX (G1363) • Volvo 97340, 97341 • Volkswagen G 052 162, G 052 990, G 055 025 • ZF TE-ML 03D, 04D, 05L, 09, 11B, 14A, 14B, 16L, 17C • JASO 1-A

**Note:** Not for use with CVT or Ford Type F applications. AMSOIL warrants the use of this product for Chrysler ATF+4<sup>®</sup> applications above -38°F. Product does not meet the cold temperature requirement of ATF+4 at -40°F. For warranty information, visit [www.amsoil.com/warranty.aspx](http://www.amsoil.com/warranty.aspx).



STOCK #	UNITS	PKG./SIZE	WT. LBS.	COST
OTFQT	EA	1 Quart	2.0	9.45
OTFQT	CA	12 Quarts	24.0	111.40
OTF1G	EA	1 Gallon	7.9	36.90
OTF1G	CA	4 Gallons	31.6	145.95
OTFTP	EA	(1) 2.5 Gallon	19.3	89.60
OTFTP	CA	(2) 2.5 Gallons	38.6	177.15

## OE Fuel-Efficient Synthetic Automatic Transmission Fluid

Ford MERCON<sup>®</sup> LV • GM DEXRON<sup>®</sup> VI • Aisin-Warner AW-1 • Audi G 055 005, G 055 162, G 060 162 • BMW 83 22 0 142 516, 83 22 2 152 426 • Honda DW-1<sup>®</sup> • Hyundai/Kia SP-IV, SPH-IV, SPH-IV-RR • JWS 3324 • Chrysler Mopar<sup>®</sup> PIN 68157995A (ZF 8 & 9 speed ATF) • Mitsubishi SP-IV, ATF J2 • Nissan Matic-S • Saab 93 165 147 • Shell M-1375.4, M-1375.5, M-1375.6, M-L 12108 • Toyota WS • Volkswagen G 055 005, G 055 162, G 060 162 • JASO 1-A • Mercedes Benz 236.12, 236.14 • Volvo 97342

**Note:** Not for use with CVT applications.

STOCK #	UNITS	PKG./SIZE	WT. LBS.	COST
OTLQT	EA	1 Quart	2.0	9.10
OTLQT	CA	12 Quarts	24.0	107.35
OTL1G	EA	1 Gallon	7.9	35.55
OTL1G	CA	4 Gallons	31.6	140.50
OTLTP	EA	(1) 2.5 Gallon	19.5	86.30
OTLTP	CA	(2) 2.5 Gallons	39.0	170.50

CVT



## Synthetic CVT Fluid

Provides outstanding protection and performance for continuously variable transmissions (CVT) throughout vehicle manufacturer-recommended drain intervals. Exceptional metal-to-metal frictional properties help prevent belt and chain slipping. Resists wear and oxidation that threaten transmission performance and life. Superior wet-clutch performance for outstanding anti-shudder durability and reduced noise and vibration.

Recommended for belt- and chain-type CVTs requiring the following: Audi/VW TL 52180, G 052 180, G 052 516 • BMW 8322 0 136 376, 8322 0 429 154, EZL 799A • Daihatsu Amix CVTF-DC, CVTF-DFE • Dodge/Jeep NS-2, CVTF+4\*, MOPAR® CVT 4 • Ford CVT23, CFTF30, WSS-M2C933-A, Motorcraft® XT-7-QCFT, MERCON® C • GM/Saturn DEX-CVT, CVTF I-Green2 • Honda HMMF, HCF-2 • Hyundai/Kia SP-CVT 1 • Mazda CVTF 3320 • Mercedes Benz CVT28, 236.20 • Mini Cooper EZL 799A, ZF CVT V1 • Mitsubishi DiaQueen CVTF-J1, CVTF-J4 • Nissan NS-1, NS-2, NS-3 • Punch EZL 799A • Shell Green 1V • Subaru e-CVTF, i-CVTF, Lineartronic® CVTF, K0425Y0710, CV-30 • Suzuki CVTF 3320, TC, NS-2, CVTF Green1, CVTF Green 2 • Toyota/Lexus TC, FE

STOCK#	UNITS	PKG./SIZE	WT. LBS.	COST
CVTQT	EA	1 Quart	2.0	13.70
CVTOT	CA	12 Quarts	24.0	162.45
CVTTP	EA	(1) 2.5 Gallon	19.5	129.85
CVTTP	CA	(2) 2.5 Gallons	39.0	257.70

MTG



## Synthetic Manual Transmission and Transaxle Gear Lube

Provides improved internal component protection. Formulated with extreme-pressure additives and advanced frictional qualities that provide smooth shifts while protecting gears, bearings and seals. Non-corrosive to yellow metals. Recommended for manual transmissions and transaxes that require 75W-85, 75W-90 or 80W-90 viscosities.

75W-90 • API GL-4

STOCK#	UNITS	PKG./SIZE	WT. LBS.	COST
MTGQT	EA	1 Quart	2.0	15.75
MTGOT	CA	12 Quarts	24.0	186.95
MTG05	EA	(1) 5-gal. Pail	38.9	299.85
MTG55	EA	55-gal. Drum	434.0	2,878.30

MTF



## Synthetic Synchronesh Transmission Fluid

Specifically designed for manual transmissions and transaxes with synchronesh systems that require light viscosity, non-extreme-pressure fortified oil. Advanced additive technology provides smooth shifting without grinding or bump shifting while providing excellent gear and bearing protection. Outperforms motor oil in manual transmissions and provides excellent performance in extreme temperatures from -40° F to 300° F. Outstanding anti-wear and anti-foam properties and non-corrosive to yellow metals. Not for use in engines or wet clutches.

STOCK#	UNITS	PKG./SIZE	WT. LBS.	COST
MTFQT	EA	1 Quart	2.1	13.65
MTFOT	CA	12 Quarts	25.2	162.05
MTF05	EA	(1) 5-gal. Pail	39.2	259.00
MTF55	EA	55-gal. Drum	436.0	2,463.15



ART



## Super Shift® Racing Transmission Fluid

Specially formulated for high-horsepower, high-torque conditions. Designed to provide quick, solid shifts and prevent automatic transmissions from slipping, helping racers improve on elapsed times. Delivers exceptional friction reduction and reduced wear so clutch plates and transmissions last longer. Provides maximum torque transfer and brake power while resisting oxidation and thermal breakdown.

Allison C-4 • Ford Type F

STOCK#	UNITS	PKG./SIZE	WT. LBS.	COST
ARTQT	EA	1 Quart	2.0	12.55
ARTQT	CA	12 Quarts	24.0	148.50

## Torque-Drive® Synthetic Automatic Transmission Fluid

Engineered to eliminate the deficiencies common to conventional petroleum ATFs, AMSOIL Torque-Drive provides superior performance and protection against thermal and oxidative degradation, sludge and varnish formation and viscosity shear down. Ideal for heavy equipment transmissions.

AMSOIL recommends Torque-Drive for use in all automatic transmissions requiring any of the following specifications: Allison C-4, TES-295, TES-389; Ford MERCON® V; GM DEXRON® III; MAN 339 Type V-1, 339 Type V-2, 339 Type Z-1, 339 Type Z-2, 339 Type Z-3, 339F; MB 236.91, 236.10; Voith 55.6335, 55.6336; Volvo 97340, 97341; ZF TE-ML 03D, TE-ML 04D, TE-ML 14A, TE-ML 14B, TE-ML 14C, TE-ML 17C, TE-ML 20B, TE-ML 20C

STOCK#	UNITS	PKG./SIZE	WT. LBS.	COST
ATD1G	EA	1 Gallon	7.8	51.95
ATD1G	CA	4 Gallons	31.2	206.10
ATDTP	EA	(1) 2.5 Gallon	19.1	126.65
ATDTP	CA	(2) 2.5 Gallons	38.2	251.25

ATD



## Synthetic Tractor/Hydraulic Transmission Oil

Formulated for combinations of transmissions, hydraulic systems, final drives, power take-off systems and wet brakes, including hydrostatic lawn mower transmissions. Exceeds the most demanding all-weather specifications of both Ford New Holland FNHA-2-C-200 & 2-C-201 and John Deere J20C & J20D, as well as most other tractor hydraulics/transmissions, eliminating the need for seasonal oil changes.

SAE 5W-30

STOCK#	UNITS	PKG./SIZE	WT. LBS.	COST
ATHOT	EA	1 Quart	2.1	10.80
ATHQT	CA	12 Quarts	25.2	127.80
ATH05	EA	(1) 5-gal. Pail	39.0	202.80
ATH30	EA	30-gal. Drum	242.1	1,082.85
ATH55	EA	55-gal. Drum	434.2	1,891.15

ATH





## Severe Gear® Synthetic EP Gear Lube

Specifically engineered for high-demand applications, including trailer towing, heavy hauling, 4x4 off-road driving, commercial use and racing. Superior lube film strength combined with extra additives protects gears and bearings from scoring and wear. Resists high heat and possesses excellent cold-flow properties. Outperforms all conventional gear oils. Recommended for all types of vehicles such as turbo-diesel pickups, SUVs, autos, trucks, heavy equipment and motor homes. Compatible with most limited-slip differentials.

### Severe Gear 75W-90 Synthetic Gear Lube

#### Top fuel efficiency and cold-temperature performance

API GL-5/MT-1 • MIL-PRF-2105E • MACK GO-J • Dana SHAES 234  
(Eaton PS-037)

STOCK#	UNITS	PKG./SIZE	WT. LBS.	COST
SVGQT	EA	1 Quart	2.0	15.85
SVGQT	CA	12 Quarts	24.0	188.70
SVG05	EA	(1) 5-gal. Pail	38.8	302.85

### Severe Gear 75W-110 Synthetic Gear Lube

#### Extra viscosity protection without sacrificing fuel efficiency

API GL-5/MT-1 • MIL-PRF-2105E • Mack GO-J • Dana SHAES 234  
(Eaton PS-037)

STOCK#	UNITS	PKG./SIZE	WT. LBS.	COST
SVTQT	EA	1 Quart	2.1	16.40
SVTQT	CA	12 Quarts	25.2	195.20
SVT05	EA	(1) 5-gal. Pail	40.0	313.45

### Severe Gear 75W-140 Synthetic Gear Lube

#### Maximum viscosity protection for severe-duty applications

API GL-5/MT-1 • MIL-PRF-2105E • MACK GO-J • Dana SHAES 234  
(Eaton PS-037)

STOCK#	UNITS	PKG./SIZE	WT. LBS.	COST
SVOQT	EA	1 Quart	2.1	17.80
SVOQT	CA	12 Quarts	25.2	211.80
SVO05	EA	(1) 5-gal. Pail	39.2	340.75



## Easy Installation

PRODUCT	STOCK#	COST
Hand Pump	G2039	11.50
Flexible Pour Spout	G1230	0.80
Nozzle Dispenser Caps (6)	G1242	1.30

PRODUCTS THE PROS USE  
*"AMSOIL Severe Gear has significantly reduced heat in our race trucks' differentials."*

— Chad Hord  
 Four World Championships





## Severe Gear® EP Synthetic Racing Gear Lube

High-viscosity, extreme-pressure gear lube engineered for the demands of severe racing conditions, including off-road truck racing, rock racing, rock crawling, tractor pulling, funny car racing and dragster racing. Protects gears from shock-loading and tire shake. Resists sling-off from G-forces and high speeds. Effectively clings to gears, promoting cooler operating temperatures and extending gear and bearing life.

### Severe Gear SAE 190 Synthetic Gear Lube

API GL-5/MT-1

STOCK#	UNITS	PKG./SIZE	WT. LBS.	COST
SRNQT	EA	1 Quart	2.1	16.90
SRNQT	CA	12 Quarts	25.2	201.00
SRN05	EA	(1) 5-gal. Pail	40.0	322.95

### Severe Gear SAE 250 Synthetic Gear Lube

API GL-5/MT-1

STOCK#	UNITS	PKG./SIZE	WT. LBS.	COST
SRTQT	EA	1 Quart	2.1	16.90
SRTQT	CA	12 Quarts	25.2	201.00
SRT05	EA	(1) 5-gal. Pail	40.0	323.00



## Long Life Synthetic Gear Lube

Specifically engineered for extended drain intervals up to 500,000 miles as set by equipment manufacturers for over-the-road trucks. Protects against wear and improves equipment life. Excellent all-season summer and winter performance. Outperforms all conventional gear oils. Also excellent for passenger cars and trucks. Compatible with most limited-slip differentials.



### 75W-90 Long Life Synthetic Gear Lube

API GL-5/MT-1 • MIL-PRF-2105E • MACK GO-J+ • Dana SHAES 256 (Eaton PS-163)

STOCK#	UNITS	PKG./SIZE	WT. LBS.	COST
FGRQT	EA	1 Quart	2.1	13.60
FGRQT	CA	12 Quarts	25.2	161.85
FGR1G	EA	1 Gallon	8.1	53.60
FGR1G	CA	4 Gallons	32.4	212.60
FGR05	EA	(1) 5-gal. Pail	39.7	258.60

### 80W-140 Long Life Synthetic Gear Lube

API GL-5/MT-1 • MIL-PRF-2105E • MACK GO-J+ • Dana SHAES 256 (Eaton PS-163)

STOCK#	UNITS	PKG./SIZE	WT. LBS.	COST
FG005	EA	(1) 5-gal. Pail	40.0	258.80
FG016	EA	16-gal. Keg	135.0	791.35
FG030	EA	30-gal. Drum	249.0	1,398.95
FG055	EA	55-gal. Drum	446.0	2,454.80

AGL



## 80W-90 Synthetic Gear Lube

High-quality replacement for applications specifying SAE 80W-90 conventional gear lube. Synthetic construction provides improved cold-flow properties, high viscosity index, superior heat resistance and excellent wear protection.

API GL-5/MT-1 • MIL-PRF-2105E • MACK GO-J • Dana SHAES 234  
(Eaton PS-037)

STOCK#	UNITS	PKG./SIZE	WT. LBS.	COST
AGLOT	EA	1 Quart	2.1	11.35
AGLOT	CA	12 Quarts	25.2	134.80
AGLTG	EA	1 Gallon	8.1	44.55
AGLTG	CA	4 Gallons	32.4	176.55
AGL05	EA	(1) 5-gal. Pail	39.8	214.30

AGM



OUTSTANDING  
PROTECTION  
FOR LOWER UNITS

## Universal Synthetic Marine Gear Lube

Provides true marine gear performance, resists foaming and retains extreme-pressure qualities even when subjected to 10 percent water contamination. For use in outboard lower units, sterndrives, V-drives, bow and tunnel thrusters and marine transmissions requiring an SAE 75W-90 or 80W-90 meeting either GL-4 or GL-5 performance standards.

GL-5, GL-4

STOCK#	UNITS	PKG./SIZE	WT. LBS.	COST
AGMTB	EA	(1) 10-oz. Tube	1.2	7.55
AGMTB	CA	(6) 10-oz. Tubes	7.2	44.20
AGMQT	EA	1 Quart	2.1	12.20
AGMQT	CA	12 Quarts	25.2	144.70
AGM05	EA	(1) 5-gal. Pail	39.4	230.60

## Slip Lock® Differential Additive

Formulated to eliminate gear-housing chatter in cars, trucks and SUVs equipped with limited-slip, posi-traction and locking differentials. Reduces banging and clunking associated with automatic locking differentials. Formulated for use with both synthetic and petroleum gear lubricants and safely replaces manufacturer-recommended friction modifiers. One tube treats differential capacities of two to four quarts.

**Note:** AMSOIL synthetic gear lubes do not require the use of this additive. However, not all differentials respond the same and if chatter is noticed, the addition of AMSOIL Slip Lock will eliminate it.

ADA



STOCK#	UNITS	PKG./SIZE	WT. LBS.	COST
ADATB	EA	(1) 4-oz. Tube	0.3	8.25
ADATB	CA	(12) 4-oz. Tubes	3.6	97.50

## Ea® Oil Filters

AMSOIL Ea Oil Filters rank among the highest efficiency filters available to the auto/light-truck market, providing a filtering efficiency of 98.7 percent at 20 microns. Featuring advanced full-synthetic technology, Ea Oil Filters provide greater efficiency, capacity and durability than cellulose filters, extending engine and filter life and reducing engine wear. When used in conjunction with AMSOIL synthetic motor oil, AMSOIL Ea Oil Filters are guaranteed for extended service life:



- Ea Filters designated with product code Ea15K are recommended for 15,000 miles/one year, whichever comes first, in normal or severe service.
- Ea Filters designated with product code EaO are recommended for 25,000 miles/one year, whichever comes first, in normal service or 15,000 miles/one year, whichever comes first, in severe service.

STOCK#	UNITS	WT. LBS.	COST	STOCK#	UNITS	WT. LBS.	COST
Ea15K01	EA	0.2	21.25	Ea15K32	EA	0.8	14.15
Ea15K02	EA	0.3	15.00	EaO34	EA	0.8	17.70
Ea15K03	EA	0.2	8.55	EaO38	EA	0.7	19.20
Ea15K04	EA	0.1	15.90	EaO40	EA	1.0	18.75
Ea15K09	EA	0.6	14.70	EaO41	EA	1.0	18.75
EaO11	EA	0.9	17.75	EaO42	EA	1.0	18.55
Ea15K12	EA	0.6	15.30	EaO43	EA	1.0	18.75
Ea15K13	EA	0.6	16.25	Ea15K50	EA	0.7	17.50
EaO14	EA	0.6	17.85	Ea15K51	EA	0.7	15.35
EaO15	EA	1.0	19.20	EaO52	EA	1.0	19.30
EaO17	EA	0.8	14.30	EaO58	EA	0.7	17.65
Ea15K20	EA	0.7	14.40	EaO59	EA	0.8	18.70
EaO21	EA	0.9	18.75	EaO64	EA	0.6	16.95
EaO23	EA	0.8	17.05	EaO80	EA	2.0	25.70
EaO24	EA	0.6	19.25	Ea15K88	EA	0.5	39.40
EaO26	EA	1.3	23.80	EaO98	EA	1.7	23.00
Ea15K29	EA	0.7	16.40	EaO99	EA	2.2	33.15
EaO31	EA	1.0	18.75				

### Which filter do I need?

Call 1-800-956-5695 (Monday-Friday, 7 a.m. - 5 p.m. Central Time) or contact the AMSOIL Dealer listed on the back of your catalog (if one is listed) to determine the appropriate filter for each application. When AMSOIL Ea Oil Filters are used with a motor oil other than AMSOIL motor oil the filter should be changed according to the vehicle manufacturer recommendation.

*Ea Oil Filters are available to Dealers and Preferred Customers by the case. See page 3 for information on becoming a Dealer or Preferred Customer.*

Fill in your vehicle information. Then call 1-800-956-5695 (Monday – Friday, 7 a.m. – 5 p.m. Central Time). You may also contact the AMSOIL Dealer listed on the back of your catalog (if one is listed) to determine your appropriate oil and air filters.

Make \_\_\_\_\_ Year \_\_\_\_\_ Model \_\_\_\_\_

Engine \_\_\_\_\_

VIN \_\_\_\_\_

Your AMSOIL Oil Filter is \_\_\_\_\_ Your WIX Oil Filter is \_\_\_\_\_

Your WIX Air Filter is \_\_\_\_\_



## More Premium Ea® Filters

AMSOIL offers a variety of specialty Ea oil and air filters constructed with premium synthetic technology. Call 1-715-399-8324 (Monday-Friday, 8 a.m. - 5 p.m. Central Time) for application information.



### Ea Heavy-Duty Extended-Life Oil Filters

Provide excellent filtering efficiency and high contaminant capacity for heavy-duty on- and off-road diesel and gasoline applications. Provide extended service intervals that coincide with the maximum drain intervals of AMSOIL synthetic motor oils.



### Ea By-Pass Filters

High-efficiency by-pass filters effectively remove minute dirt particles and soot. Provides an efficiency rating of 98.7 percent at two microns and filters all the oil in a typical five-quart sump in less than 10 minutes at normal operating RPM.

*Some mechanical ability required for installation.*



### Ea Universal Air Induction Filters

Fit most popular air intake systems on the market, providing improved cold air intake and excellent efficiency for superior engine protection and performance. Cleanable and remain serviceable for long filter life.



### Ea Racing Air Filters

Specially designed for carbureted racing and street rod applications, providing higher dirt-holding capacity, lower pressure drop and greater airflow and efficiency. Cleanable and remain serviceable for long filter life.



### Ea Pre-Filters

Constructed of woven mesh and designed to fit over the top of Ea Racing and Air Induction Filters, preventing large particles from sticking to them and blocking airflow. Easily removed and shaken free of debris in seconds. Cleanable and remain serviceable for up to one year.



### Ea Motorcycle Oil Filters

Designed for motorcycles, ATVs and four-stroke personal watercraft, snowmobiles and outboard motors, stopping smaller dirt particles, offering less restriction, extending equipment and filter life and improving performance. Fluted for easy removal. Available in black or chrome.

GRG



## DOMINATOR® Synthetic Racing Grease

Ultimate protection for high-speed, high-temperature, extreme-pressure applications. Maximizes power, bearing efficiency and fuel efficiency, while delivering superior wear protection and friction reduction for wheel bearings and chassis components in racing vehicles operated on snow, dirt, water or pavement.

NLGI No. 2, GC/LB

STOCK#	UNITS	PKG./SIZE	WT. LBS.	COST
GRGCR	EA	(1) 14-oz. Cartridge	1.0	13.15
GRGCR	CA	(10) 14-oz. Cartridges	10.0	126.55

## Synthetic Polymeric Off-Road Grease

Formulated to resist impact/pound-out and provide outstanding protection and performance in the extreme environments faced in heavy-duty off-road equipment. Provides exceptional adhesion and cohesion properties, resists water washout and stays in place longer, providing outstanding lubrication over extended service intervals, reducing maintenance costs and extending equipment life.

### Synthetic Polymeric Off-Road Grease

NLGI No. 1

STOCK#	UNITS	PKG./SIZE	WT. LBS.	COST
GPOR1CR	EA	(1) 15-oz. Cartridge	1.0	9.75
GPOR1CR	CA	(10) 15-oz. Cartridges	10.0	92.85

### Synthetic Polymeric Off-Road Grease

NLGI No. 2

STOCK#	UNITS	PKG./SIZE	WT. LBS.	COST
GPOR2CR	EA	(1) 15-oz. Cartridge	1.0	10.10
GPOR2CR	CA	(10) 15-oz. Cartridges	10.0	96.65

## Synthetic Polymeric Truck, Chassis and Equipment Grease

Delivers excellent wear protection and performance in the severe-service, extreme-pressure environments faced in medium- and heavy-duty over-the-road trucks and equipment. Clings tenaciously to metal surfaces, staying in place to seal out water and contaminants and provide a protective barrier between metal components. Extended service life reduces the need for frequent re-application (or requires less grease at each servicing), reducing maintenance costs and increasing equipment life.

### Synthetic Polymeric Truck, Chassis and Equipment Grease

NLGI No. 1

STOCK#	UNITS	PKG./SIZE	WT. LBS.	COST
GPTR1CR	EA	(1) 14-oz. Cartridge	1.0	8.35
GPTR1CR	CA	(10) 14-oz. Cartridges	10.0	79.55

### Synthetic Polymeric Truck, Chassis and Equipment Grease

NLGI No. 2

STOCK#	UNITS	PKG./SIZE	WT. LBS.	COST
GPTR2CR	EA	(1) 14-oz. Cartridge	1.0	8.55
GPTR2CR	CA	(10) 14-oz. Cartridges	10.0	81.95

GPOR1



GPOR2



GPTR1



GPTR2



GLC



## Synthetic Multi-Purpose Grease

Reduces friction and wear in high-speed/high-temperature components such as automotive wheel bearings and electric motors. Keeps components running clean and trouble-free for outstanding performance and long life.

NLGI No. 2, GC/LB

STOCK#	UNITS	PKG./SIZE	WT. LBS.	COST
GLCCR	EA	(1) 14-oz. Cartridge	1.0	7.95
GLCCR	CA	(10) 14-oz. Cartridges	10.0	75.05
GLC3P	EA	(3) 3-oz. Cartridges	0.6	10.40
GLC3P	CA	(30) 3-oz. Cartridges	5.6	97.55
GLCKT	EA	Grease Gun Kit	1.6	28.70

GLC3P



GLCKT

GWR



GWR3P



## Synthetic Water-Resistant Grease

Resists water washout and corrosion. Maximum protection for boat trailer wheel bearings, outboard motors, ATVs, UTVs and other components frequently exposed to water.

NLGI No. 2, GC/LB

STOCK#	UNITS	PKG./SIZE	WT. LBS.	COST
GWRRCR	EA	(1) 14-oz. Cartridge	1.0	8.50
GWRRCR	CA	(10) 14-oz. Cartridges	10.0	80.65
GWR3P	EA	(3) 3-oz. Cartridges	0.6	11.30
GWR3P	CA	(30) 3-oz. Cartridges	5.6	106.20

GXC



## X-Treme Synthetic Food Grade Grease

An ultra-premium lubricant designed for high levels of protection in food and pharmaceutical industry equipment. NSF-approved (formerly USDA H-1) for incidental contact with food. Excellent for high-temperature and extreme-pressure protection.

NLGI No. 2

STOCK#	UNITS	PKG./SIZE	WT. LBS.	COST
GXCCR	EA	(1) 14-oz. Cartridge	1.0	10.30
GXCCR	CA	(10) 14-oz. Cartridges	10.0	98.15



GEC

## Arctic Synthetic Grease

Provides extreme low-temperature pumpability and superior protection for equipment operating in harsh climates where temperatures drop well below freezing, ensuring superior load and wear protection where conventional greases are ineffective.

NLGI No. 1

STOCK#	UNITS	PKG./SIZE	WT. LBS.	COST
GECCR	EA	(1) 15-oz. Cartridge	1.0	11.50
GECCR	CA	(10) 15-oz. Cartridges	10.0	107.90

FWG



## Synthetic Fifth-Wheel Grease

Delivers long service life and outstanding protection against wear and corrosion in the heavily-loaded, harsh operating environments specific to fifth-wheel hitches used in trucking and trailer applications.

NLGI No. 2

STOCK#	UNITS	PKG./SIZE	WT. LBS.	COST
FWGTB	EA	(1) 10-oz. Tube	0.7	8.35
FWGTB	CA	(12) 10-oz. Tubes	8.4	98.65

GSP



## Spray Grease

Effectively reduces friction and wear, keeping components running clean and trouble-free for outstanding performance and long life. Applies quickly and evenly and is ideal for greasing hard-to-reach equipment, including hinges, springs and other common applications.

STOCK#	UNITS	PKG./SIZE	WT. LBS.	COST
GSPSC	EA	(1) 10-oz. Spray Can	0.7	6.25
GSPSC	CA	(12) 10-oz. Spray Cans	7.5	73.75

ABC



## Semi-Synthetic Bar and Chain Oil

Clings to metal surfaces better than other oils.  
Delivers outstanding lubrication and protection.

STOCK#	UNITS	PKG./SIZE	WT. LBS.	COST
ABCQT	EA	1 Quart	2.1	6.55
ABCQT	CA	12 Quarts	25.2	76.95
ABC1G	EA	1 Gallon	8.1	25.30
ABC1G	CA	4 Gallons	32.4	99.45
ABC05	EA	(1) 5-gal. Pail	39.2	119.30

PCI



## Synthetic Compressor Oil

Provides outstanding protection and performance in rotary screw, rotary vane, reciprocating and other compressor applications. Compatible with PAO-, ester- and petroleum-based compressor oils. Not compatible with glycol- or silicone-based compressor oils.

### Synthetic Compressor Oil

ISO 46, SAE 20

STOCK#	UNITS	PKG./SIZE	WT. LBS.	COST
PCIQT	EA	1 Quart	2.0	12.15
PCIQT	CA	12 Quarts	24.0	143.55
PCI05	EA	(1) 5-gal. Pail	38.4	228.60

### Synthetic Compressor Oil

ISO 100, SAE 30/40

STOCK#	UNITS	PKG./SIZE	WT. LBS.	COST
PCKQT	EA	1 Quart	2.1	12.75
PCKQT	CA	12 Quarts	25.2	151.00
PCK05	EA	(1) 5-gal. Pail	38.8	240.85

AST



## Gasoline Stabilizer

Formulated to keep fuel from deteriorating during storage. Reduces the oxidation process to help prevent varnish and gum buildup in gasoline, which can clog injectors, stick floats and cause poor engine performance. Treat rate is 1 ounce with every 2.5 gallons of fuel. One bottle treats 40 gallons.

STOCK#	UNITS	PKG./SIZE	WT. LBS.	COST
ASTCN	EA	(1) 16-oz. Bottle	1.1	11.75
ASTCN	CA	(6) 16-oz. Bottles	6.6	69.65



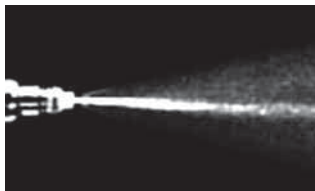


**Industry's Most Advanced  
Formulation Improves  
Fuel Economy**

## P.i.® Performance Improver

P.i. Performance Improver ranks among the most potent gasoline additives available today. As a concentrated detergent, it is outstanding in cleaning combustion chamber deposits, intake valve deposits and fuel injector deposits, eliminating the need for expensive fuel injector cleaning procedures. It is ideal for use prior to emissions inspections, and it helps maintain peak engine efficiency, fuel economy, power and drivability in newer low-mileage engines. In engines with accumulated deposits, P.i. provides improved fuel mileage up to 5.7%, reduced emissions, restored power and performance, reduced need for higher octane fuel, reduced carbon rap and preignition, better drivability and smoother operation after only one tank of gasoline. Excellent for both gasoline direct injected (GDI) and port fuel injected engines. Treat one full tank of gas every 4,000 miles (100 hours of service for marine, stationary and off-road gas-powered engines). One bottle treats one full tank of gas up to 20 gallons.

STOCK#	UNITS	PKG./SIZE	WT. LBS.	COST
APICN	EA	(1) 12-oz. Bottle	0.9	12.15
APICN	CA	(12) 12-oz. Bottles	10.8	143.90

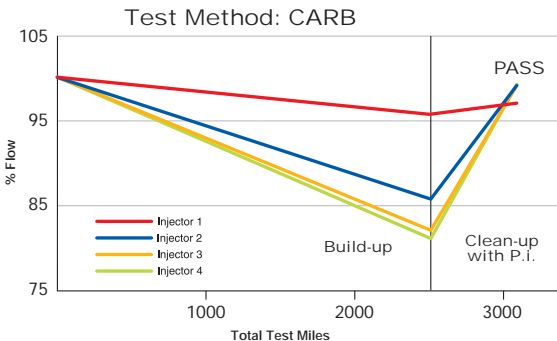


Injector spray pattern before P.i. treatment.



Injector spray pattern after P.i. treatment.

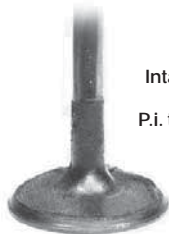
Two of the four dirty injectors tested were fouled >15% and another was fouled >10%. After one tank of operation on AMSOIL P.i., all injectors returned to >95% flow.



Intake valve before P.i. treatment.



Intake valve after P.i. treatment.





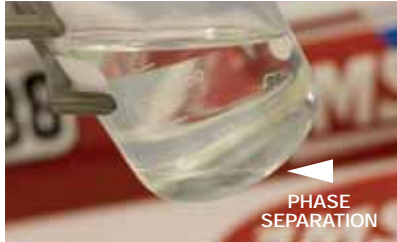
**Addresses Ethanol-Related Performance issues**

## Quickshot®

Formulated to thoroughly clean varnish, gums and insoluble debris in two- and four-stroke gasoline-powered small engines and powersports equipment fuel systems, restoring peak performance. Effectively addresses performance issues related to ethanol, water and dirty pump gas. Stabilizes fuel between uses and during short-term storage periods. See package for treat rates.

**Motorcycles • Snowmobiles • Boats • ATVs • Edgers • Tillers • Mowers • Snowblowers • Chainsaws • Generators • Farm & Construction Equipment • and more**

STOCK#	UNITS	PKG./SIZE	WT. LBS.	COST
AQSCN	EA	(1) 8-oz. Bottle	0.6	9.40
AQSCN	CA	(6) 8-oz. Bottles	3.6	55.70
AQSQT	EA	1 Quart	2.0	28.85
AQSQT	CA	12 Quarts	24.0	344.65



**Phase separation is when ethanol/water mixtures fall to the bottom of fuel tanks and containers, leading to lean-burn conditions.**

**Quickshot helps keep water molecules dispersed to prevent phase separation.**

Degraded fuel can present a major maintenance issue in motorcycle engines, forming varnish, gum and insoluble debris that clog carburetors, fuel injectors and fuel filters. Carbon buildup can form on the tops of pistons resulting in pre-ignition, rough idling and poor throttle response. Fuel-related problems are only expected to intensify in the coming years as the ethanol content in pump gasoline continues to increase.

AMSOIL Quickshot® (AQS) is a premium fuel additive formulated to thoroughly clean and restore peak performance in motorcycle and powersports equipment fuel systems. It also stabilizes fuel between uses and during short-term storage periods.

AOB



MOB



DRC



Keep a bottle  
on hand for  
emergencies

ACB



## DOMINATOR® Octane Boost

Improves the performance of all two- and four-stroke gasoline-fueled engines. Increases octane up to four numbers. Maximizes power, reduces engine knock and improves ignition and engine response. Helps fuel burn cleaner and removes carbon deposits. Excellent as a lead substitute at same treat rates in collector automobiles, older off-road equipment, 4x4 off-road vehicles and gasoline racing vehicles. One bottle treats 15 gallons.

STOCK#	UNITS	PKG./SIZE	WT. LBS.	COST
AOBBE	EA	(1) 12-oz. Bottle	0.8	10.05
AOBBE	CA	(6) 12-oz. Bottles	4.8	59.40

## Motorcycle Octane Boost

Increases octane up to three numbers for maximum power and efficiency in motorcycles. Designed to improve startup performance and eliminate engine ping or knock for increased power at low-rpm operation. Treat rate is 1.3 oz. per gallon of fuel. One bottle treats 4 to 6 gallons.

STOCK#	UNITS	PKG./SIZE	WT. LBS.	COST
MOBCN	EA	(1) 4-oz. Bottle	0.4	5.00
MOBCN	CA	(12) 4-oz. Bottles	4.8	58.50

## Diesel Recovery

Quickly and effectively dissolves the wax crystals that form when diesel fuel surpasses its cloud point. Quickly liquefies gelled diesel fuel, thaws frozen fuel filters and reduces the need for a new filter, saving money and allowing the operator to continue driving with minimal downtime. Performs well in all diesel fuels, including ULSD, off-road and biodiesel. Alcohol-free and non-corrosive. One ounce treats 1 gallon of fuel. One bottle treats 30 gallons.

STOCK#	UNITS	PKG./SIZE	WT. LBS.	COST
DRCCN	EA	(1) 30-oz. Bottle	2.0	14.40
DRCCN	CA	(12) 30-oz. Bottles	24.0	171.00

## Diesel Cetane Boost

Raises the cetane number of diesel fuel up to seven points for maximum horsepower, increased fuel economy and easier starts in all diesel engines. One ounce treats up to 10 gallons of fuel. One bottle treats up to 160 gallons.

*Five-gallon pails are filled to 98 percent of packaging capacity to allow for product expansion in warm temperatures.*

STOCK#	UNITS	PKG./SIZE	WT. LBS.	COST
ACBCN	EA	(1) 16-oz. Bottle	1.3	9.30
ACBCN	CA	(12) 16-oz. Bottles	15.6	109.90
ACBHG	EA	(1) 64-oz. Bottle	4.2	27.45
ACBHG	CA	(6) 64-oz. Bottles	25.2	176.10
ACB05	EA	(1) 5-gal. Pail	43.3	260.50

UP TO 4.5%  
FUEL ECONOMY IMPROVEMENT



ADF

## Diesel Injector Clean

Total system cleaner and lubricity improver for all types of heavy- and light-duty diesel engines, including high-pressure common-rail (HPCR) designs. Outstanding new formula cleans all deposits, including carbon deposits on the nozzle and internal diesel injector deposits (IDID) on the pintle. Formulated with ultra-low-sulfur diesel fuel (ULSD) in mind, it effectively cleans fuel injectors and combustion chamber for improved efficiency and better sealing. Minimizes soot-loading. Improves the oxidation and thermal stability of diesel fuel, improves fuel economy by up to 4.5 percent, restores horsepower and protects against water contamination. Compatible with all types of exhaust emission systems, including diesel particulate filters (DPF). Also recommended in heating-oil furnace applications. One ounce treats 5 gallons of fuel. One 16-oz. bottle treats 80 gallons.

STOCK#	UNITS	PKG./SIZE	WT. LBS.	COST
ADFPN	EA	(1) 8-oz. Bottle	0.6	4.70
ADFPN	CA	(6) 8-oz. Bottles	3.6	27.40
ADFCN	EA	(1) 16-oz. Bottle	1.2	8.45
ADFCN	CA	(12) 16-oz. Bottles	14.4	99.40
ADFHG	EA	(1) 64-oz. Bottle	4.2	26.85
ADFHG	CA	(6) 64-oz. Bottles	25.2	160.35
ADF05	EA	(1) 5-gal. Pail	40.2	234.65



ACF

## Diesel Cold Flow

Recommended for low-temperature applications below 40°F. Effectively modifies wax crystal formation at low temperatures to depress diesel fuel pour point and improve cold-flow filtration properties. Lowers the cold filter plugging point (CFPP) by up to 20°F (15°C) in ultra-low-sulfur diesel fuel (ULSD). Contains jet-fuel-type deicer to help prevent ice formation in fuels contaminated with water. Compatible with diesel particulate filters (DPF). Two ounces treat 5 gallons of fuel. One bottle treats 40 gallons.

STOCK#	UNITS	PKG./SIZE	WT. LBS.	COST
ACFCN	EA	(1) 16-oz. Bottle	1.2	7.85
ACFCN	CA	(12) 16-oz. Bottles	14.4	92.70
ACF05	EA	(1) 5-gal. Pail	40.0	217.00

DFC



## Diesel Injector Clean + Cold Flow

Premium, year-round diesel fuel additive that provides improved efficiency and maximum cold-weather performance. Outstanding formula cleans all deposits, including carbon deposits on the nozzle and internal diesel injector deposits (IDID) on the pintle. Combines the superior detergency and lubricity of AMSOIL Diesel Injector Clean with the excellent anti-gelling properties of AMSOIL Diesel Cold Flow in one convenient package without sacrificing performance. Two ounces treat 5 gallons of fuel. One bottle treats 40 gallons.

STOCK#	UNITS	PKG./SIZE	WT. LBS.	COST
DFCCN	EA	(1) 16-oz. Bottle	1.2	10.20
DFCCN	CA	(12) 16-oz. Bottles	14.4	120.50
DFC05	EA	(1) 5-gal. Pail	40.0	300.65

FOG



## Engine Fogging Oil

Superior film retention provides stored equipment with long-term protection against corrosion and dry starts, extending engine life and reducing operating expenses.

STOCK#	UNITS	PKG./SIZE	WT. LBS.	COST
FOGSC	EA	(1) 12-oz. Aerosol Can	0.8	8.15
FOGSC	CA	(6) 12-oz. Aerosol Cans	4.8	48.20

APF



## Power Foam®

Removes stubborn carbon deposits, varnish and gum in combustion intake systems. Helps restore startability and engine smoothness, while maximizing fuel economy and horsepower for improved overall engine performance. Especially effective in powersports, small-engine and carbureted-vehicle applications.

STOCK#	UNITS	PKG./SIZE	WT. LBS.	COST
APFSC	EA	(1) 18-oz. Spray Can	1.5	8.70
APFSC	CA	(12) 18-oz. Spray Cans	18.0	102.90

ADG



## Heavy-Duty Degreaser

Formulated with powerful and fast-acting solvents, attacking petroleum-based grime on a molecular level to loosen its hold on metal, concrete, engines and other surfaces. Active d'limonene (citrus) formula makes cleaning easy and leaves a clean scent.

STOCK#	UNITS	PKG./SIZE	WT. LBS.	COST
ADGSC	EA	(1) 15-oz. Spray Can	1.5	15.90
ADGSC	CA	(12) 15-oz. Spray Cans	18.0	189.00

ALS



## Silicone Spray

Effectively lubricates and protects rubber, nylon, plastics, upholstery, vinyl, wood, cardboard, fiberglass and other nonmetal surfaces with a dry lubricating film. Helps prevent the cracking and drying of rubber, locks-out moisture and will not attract dust or dirt. Special nonstaining formula is excellent for water-proofing and protecting leather boots, shoes, jackets, suede and more.

STOCK#	UNITS	PKG./SIZE	WT. LBS.	COST
ALSSP	EA	(1) 10-oz. Spray Can	0.9	8.00
ALSSP	CA	(12) 10-oz. Spray Cans	10.8	94.50

Hundreds of household uses



AMP



## Metal Protector

Disperses water and protects metal surfaces from rust and corrosion. Penetrates existing rust build-up and loosens bolts. Also dries wet electrical systems. A must for any home or shop. Keep a can in your vehicle too.

STOCK#	UNITS	PKG./SIZE	WT. LBS.	COST
AMPSC	EA	(1) 8.75-oz. Spray Can	0.8	6.40
AMPSC	CA	(12) 8.75-oz. Spray Cans	9.6	75.35

AMH



## Heavy Duty Metal Protector

Heavy-duty spray lubricant fortified with special rust and corrosion inhibitors. Penetrates and adheres to metal surfaces, leaving a dry, long lasting wax-like protective coating. Dries completely and doesn't attract dust. Works well as an undercoat, preventing rust and eliminating squeaks.

STOCK#	UNITS	PKG./SIZE	WT. LBS.	COST
AMHSC	EA	(1) 16-oz. Spray Can	1.4	10.15
AMHSC	CA	(12) 16-oz. Spray Cans	16.8	120.15

FLSH



## Engine and Transmission Flush

Helps restore operating efficiency, increase fuel economy and reduce emissions in gasoline and diesel engines and automatic transmissions. Its potent, detergent-based formula dissolves and disperses sludge, varnish and deposits, promoting lower operating temperatures and reduced oil consumption. More environmentally friendly than solvent-based products, providing safer cleaning action and easy disposal with waste oil.

STOCK#	UNITS	PKG./SIZE	WT. LBS.	COST
FLSHCN	EA	(1) 16-oz. Bottle	1.2	10.05
FLSHCN	CA	(12) 16-oz. Bottles	14.4	119.00
FLSH05	EA	(1) 5-gal. Pail	40.0	300.40

## Propylene Glycol Antifreeze and Engine Coolant

Combines the benefits of biodegradability, low toxicity and all-weather protection. AMSOIL Propylene Glycol Antifreeze and Engine Coolant is less toxic than ethylene glycol coolants. Offers protection for 750,000 miles/7 years for over-the-road diesel trucks and 250,000 miles/7 years for gasoline vehicles. Compatible with all other major antifreeze products.

ANT



STOCK#	UNITS	PKG./SIZE	WT. LBS.	COST
ANT1G	EA	1 Gallon	9.8	43.90
ANT1G	CA	4 Gallons	39.2	173.75

To test freeze protection and additive concentration, order antifreeze test strips:

STOCK#	UNITS	PKG./SIZE	WT. LBS.	COST
G1164	EA	50 Strips	0.1	13.30
G1165	EA	6 Strips	0.1	4.95

RDCB



## Dominator® Coolant Boost

Provides quick and effective heat transfer inside radiator and cylinder heads, resulting in reduced operating temperatures, more efficient operation, increased horsepower and quicker engine warm-up times. Robust mixture of corrosion inhibitors effectively protect the radiator, heater core, water pump, cylinder heads, engine block and intake manifold from the damaging effects of corrosion. Recommended with both racing applications using straight water coolant and automotive applications using 50/50 coolant/water mixtures.

STOCK#	UNITS	PKG./SIZE	WT. LBS.	COST
RDCBCN	EA	(1) 16-oz. Bottle	1.1	11.55
RDCBCN	CA	(6) 16-oz. Bottles	6.6	68.55

BF3



BF4



## High Performance Brake Fluid

Provides superior performance in auto/light-truck, high-performance, racing and powersports applications. Maintains stable viscosity over a wide temperature range. Superior additive package raises boiling point. Water is kept in suspension, slowing its effects on braking systems. High boiling temperature ensures maximum life and reliable braking power in extreme conditions.

### Series 500 High Performance DOT 3 Brake Fluid

FMVSS 116 • SAE J1703 • ISO 4925 • Federal Specification V V-B-680

STOCK#	UNITS	PKG./SIZE	WT. LBS.	COST
BF3SN	EA	(1) 12-oz. Bottle	1.0	7.65
BF3SN	CA	(12) 12-oz. Bottles	12.0	90.20

### Series 600 High Performance DOT 4 Brake Fluid

FMVSS 116 • SAE J1704 • ISO 4925 • Federal Specification V V-B-680

STOCK#	UNITS	PKG./SIZE	WT. LBS.	COST
BF4SN	EA	(1) 12-oz. Bottle	1.0	14.05
BF4SN	CA	(12) 12-oz. Bottles	12.0	167.15

PSF



## Multi-Vehicle Synthetic Power Steering Fluid

Effectively reduces friction and delivers excellent wear protection and lubricity, resulting in cooler operating temperatures, longer component life and quieter operation. Low pour point ensures immediate lubrication at startup and in cold temperatures, while high viscosity index resists thermal breakdown and maintains maximum protection in high temperatures.

American Motor Corporation C 4124 • BMW 82 11 0 148 132; 83 29 0 429 576; 81 22 1 468 879 & 82 11 1 468 041 • Chrysler MS-1872; MS-5931, MS-9602 & MS-11655 • Ford M2C138-CJ; ESW-M2C128-C&D; M2C195-A; M2C204-A & M2C33-F • GM/Saginaw PSF 9985010; 9985835 & 89021184 • Hyundai/Kia PSF-3; PSF-4 & PSF 00232-19017 • Mercedes Benz 236.3; 345.0; 001 989 24 03 10; 001 989 24 03 12 & Q 1 32 0001 • Mitsubishi Diamond SP III & PS Fluid • Navistar TMS 6810 • Nissan PSF-II • Porsche 000 043 206 56 • Saab 93160548; (45) 30 09 800 & 30 32 380 • Subaru K0209A0080 • Toyota PSF Type EH; P/N 008886-01 • Volvo 1161529 & 30741424 • VW/Audi TL-52146; G002000; G 004 000 M2; G 004 000 M7 & G 004 000 M8

STOCK#	UNITS	PKG./SIZE	WT. LBS.	COST
PSFCN	EA	(1) 16-oz. Bottle	1.1	7.60
PSFCN	CA	(12) 16-oz. Bottles	13.2	89.45



## Fluid Extraction Pump

STOCK#	WT.LBS.	COST
G2576	2.0	17.35

Aids in the removal of power steering fluid, motor oil, drivetrain lubricants and engine coolant. Can also be used to install fresh lubricants in hard-to-reach areas.

AMW



## Miracle Wash® Waterless Wash & Wax

A unique dry car wash and polish delivers outstanding performance and quick, easy and economical application. No water required. Specially formulated surfactants lift dirt and other particles from the surface and hold them in suspension. Miracle Wash then acts as a shield, protecting the surface from abrasion while you wipe the dirt away. Repels dust and light dirt particles and protects against the sun's ultraviolet rays.

STOCK#	UNITS	PKG./SIZE	WT. LBS.	COST
AMWSC	EA	(1) 13-oz. Spray Can	1.0	9.85
AMWSC	CA	(12) 13-oz. Spray Cans	12.0	116.70

## Aftermarket Partners

AMSOIL also offers premium filtration products from its aftermarket partners, including Donaldson, WIX and MANN FILTER.

For product and pricing information, call 1-800-956-5695 (Monday - Friday, 7 a.m. - 5 p.m. Central Time) or contact the AMSOIL Dealer listed on the back of your catalog (if one is listed).



## The Company of FIRSTS

More than 40 Years of Innovation and Leadership

FIRST API-qualified 100 percent synthetic motor oil.

FIRST to introduce the concept of "extended drain intervals" with a recommended 25,000-mile/12-month drain interval.

FIRST synthetic gear lube for automotive use.

FIRST synthetic motor oil for diesel engines.

FIRST synthetic motor oil for racing engines.

FIRST synthetic motor oil for turbocharged engines.

FIRST synthetic motor oil for marine engines.

FIRST 100:1 pre-mix synthetic 2-cycle oil.

FIRST synthetic automatic transmission fluid for automotive use.



TO ORDER – Call 1-800-956-5695, 7 a.m. to 5 p.m. Central Time, M – F  
Free Shipping on Orders of \$100 or More (except in Alaska and Hawaii)



*The First in Synthetics*®

AMSOIL INC.  
One AMSOIL Center  
Superior, WI 54880

WE HONOR



(Discover in U.S. only)

### Your Servicing AMSOIL Dealer

Refer to this referral number to save time and make ordering easier. Call toll-free at 1-800-956-5695. Credit card orders only. ▼

**5126086**

Referral # \_\_\_\_\_